



RANGE

Effortlessly capture vehicles, furniture, people with Revopoint's new infrared structured light 3D scanner. With an impressive single capture range of 360mm x 650 mm@600 mm and high-speed 12-18fps scanning speed, it gets scans done fast.



Single frame precision
up to 0.1mm



Single capture range
360mmx650mm



12 fps - 18fps



Compatible with
Windows/Android/iOS/macOS



Eye-safe
class 1 infrared light

Powerful Projector

Efficiently scan cars, furniture, people, and many more large objects. Because the RANGE's new powerful infrared projection system with brighter and higher resolution structured light enables scanning between 300mm to 800mm distance with a single capture range of 360mm x 650mm @600mm.

High Precision

With a single-frame precision of up to 0.1mm and a point distance of up 0.3mm, the RANGE's new dual IR cameras with aspheric lenses reduce image aberrations and ensure that the micro-structured infrared light evenly reaches the sensors. Making it a powerful tool for reverse engineering projects, interior design modeling, VR/AR model creation, and many more applications.

High-speed Scanning

With a scanning speed of 12 to 18 frames per second, you can move the RANGE naturally and smoothly around the object you want to scan. And the integration of a proprietary chip and new advanced algorithms allows for even smoother frame stitching for increased scanning efficiency.

Supports a Variety of Accessories

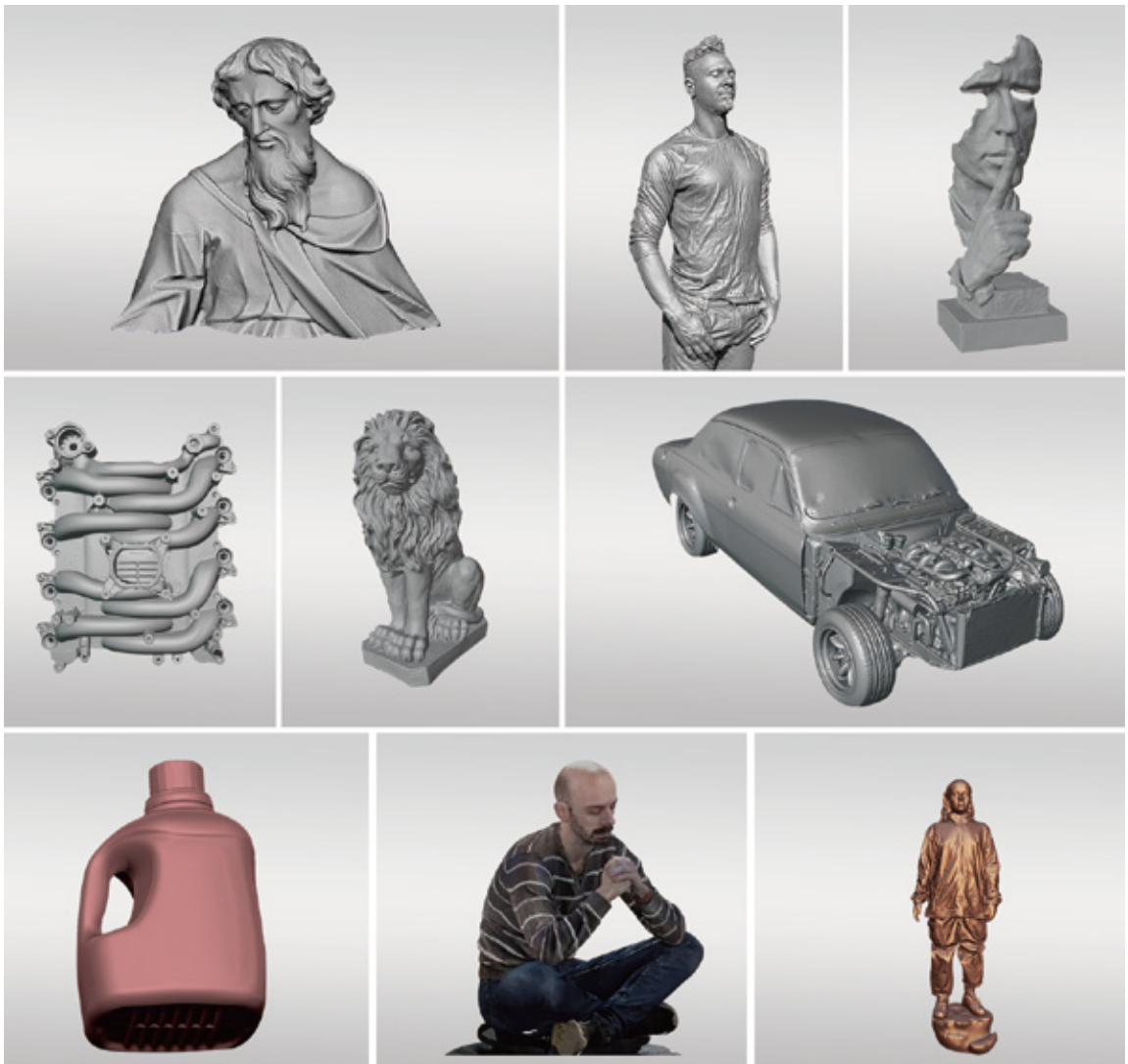
RANGE supports Revopoint's motorized large turntable, handheld stabilizer, and other accessories.

Lightweight and Portable

RANGE weighs only 210g and can easily be carried in a backpack with accessories, so it's always ready to scan.

Applications

RANGE meets the 3D modeling needs of multiple scenarios, such as reverse engineering projects, interior design modeling, VR/AR, digital artifacts, cultural and creative design, etc.



Specifications

Product Name	RANGE 3D scanner
Technology	Binocular dual camera infrared light
Single-frame Precision	0.1mm
Single-frame Accuracy	0.3mm
Single Capture Range	360mm x 650mm @600mm
Working Distance	300mm - 800mm
Minimum Scan Volume	70mm x 70mm x 70mm
Scan Speed	12fps - 18fps
Light Source	Class I infrared light
Alignment Modes	Feature, Marker
Color Scanning	Yes
Exportable Formats	PLY, OBJ, STL
Point Distance/Resolution	0.3mm
Special Object Scanning	For scanning dark, transparent, or highly-reflective surfaces, we recommend using scanning spray.
Scanning Environment	Indoor, outdoor
Outdoor Scanning	When scanning outdoors, please avoid strong sunlight.
Scanner weight	210g
Scanner Size	295mm x 41.5mm x 28.2mm
Compatible with 3D Printing	Yes
Compatible Systems	Windows 10/11 (64-bit), Android, iOS, macOS
PC Display Resolution	>1344x768 (Recommended 1920x1080)
Connection Method	USB 3.0 or Wi-Fi
Bluetooth	4.1
Hardware Buttons	Start/pause scanning
Notes	<ol style="list-style-type: none"> 1. Accuracy was acquired in a controlled lab environment. Actual results might vary, subject to the operation environment. 2. iOS devices only support Wi-Fi connection. 3. Class 1 Laser: Avoid direct eye exposure for extended periods! Refer to Standards for Class 1 Lasers for details.