



POP 3

POP 3 is the next-gen 3D scanner from the POP series with new and improved hardware, design, and usability. The improvements in POP 3's capabilities make capturing 3D scans for 3D printing, 3D animation, reverse engineering, healthcare, product design, digitizing historical items, VR/AR, and more even easier.



Up to 0.05mm
Single-frame Precision



12-18fps Smooth
Scanning



Bigger Aperture Size
for Better Color Scans



IMU Motion
Tracking



IR & White LEDs
for Enhanced Scanning



Type-C



Touch Button
Controls

Accurate and Detailed 3D Models

Generate 3D models with a single-frame precision of up to 0.05mm, smooth stitching with an improved 12-18fps frame rate, while a new lens design increases the aperture for more vivid texture mapping.

Precision in Every Movement

Improved scanning smoothness with POP 3's 9-axis IMU providing accurate motion tracking and intelligent algorithms effectively reduce shake faults and eliminate frame stitching errors.

Auxiliary Lighting for Vivid Color

Camera-mounted powerful White and Infrared LEDs improve model texture mapping and enhance scanning efficiency, ease of use, and accuracy in marker tracking mode.

Type-C

A more versatile and convenient option for connecting and powering POP 3.

High-speed Wi-Fi 6

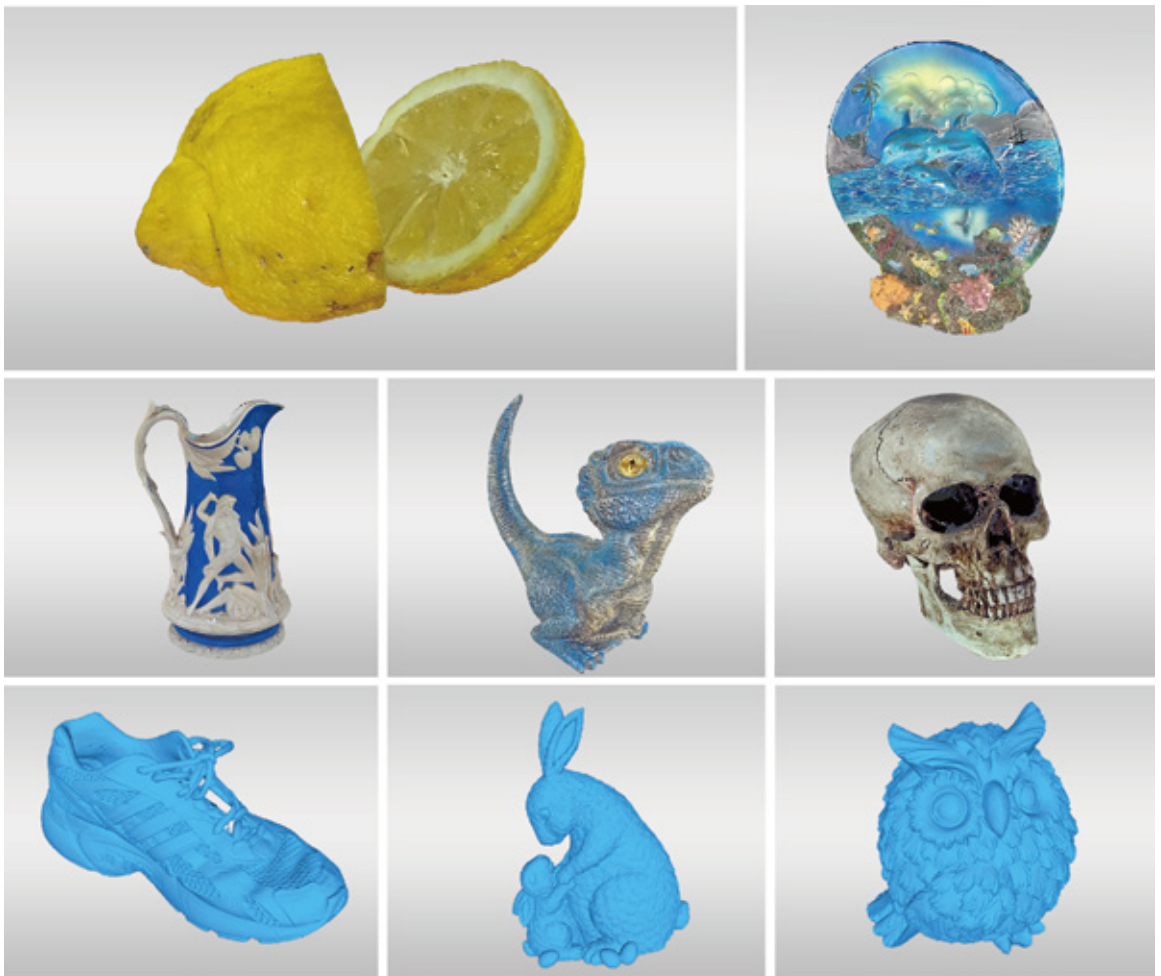
For a faster, lower latency, and more stable Wi-Fi scanning experience.

Responsive Touch Controls

Enjoy increased usability with POP 3's redesigned appearance integrating touch panel function keys for easier control and dual LED indicators for better visual feedback.

Applications

The POP 3 is optimized for scanning medium-sized objects streamlining 3D printing, reverse engineering, automotive interior, healthcare, and other customized needs. It empowers rapid 3D content production and reduces cost, empowering more industries with advanced, affordable 3D scanning capabilities.



Specifications

Product Name	POP 3 3D Scanner
Technology	Biocular Dual Camera Infrared Light
Single-frame Precision	Up to 0.05mm
Single-frame Accuracy	Up to 0.1mm
Single Capture Range	125mm x 225mm
Working Distance	150mm - 400mm
Minimum Scan Volume	20mm x 20mm x 20mm
Scanning Speed	12fps - 18fps
Light Source	Class 1 Infrared Light
Tracking Methods	Feature, Marker
Output Formats	PLY, OBJ, and STL
Point Distance/Resolution	0.05mm
Special Object Scanning	Use scanning spray for transparent, dark, or highly reflective objects.
Scanning Environment	Indoors and Outdoors
Outdoor Scanning	The POP 3 cannot scan objects well in direct bright sunlight.
Scanner Dimensions	153mm x 45mm x 29mm
Compatible OS	Windows, Android, iOS, macOS
Buttons	Three touch buttons.
Button Functions	Start/Pause scanning, adjusting exposure
LED Indicators	Connection indicator shows the connection status. Power indicator shows the power status.
PC Display Screen Resolution	>1344x768 (1920x1080 is recommended)
Wi-Fi	Wi-Fi 6
Connection Port	Type-C

- Notes**
1. Accuracy was acquired in a controlled lab environment. Actual results might vary, subject to the operation environment.
 2. iOS devices only support Wi-Fi connection.
 3. Class 1 Laser: Avoid direct eye exposure for extended periods! Refer to Standards for Class 1 Lasers for details.