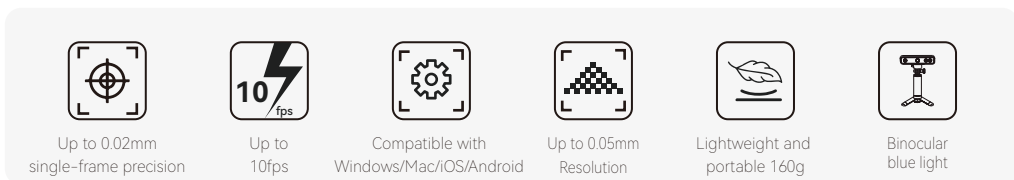




MINI

The high-precision and compact MINI 3D scanner's industrial-level binocular blue light scanning technology enables efficient and highly accurate 3D scanning with a single-frame precision of up to 0.02mm, allowing even the tiniest parts to be accurately scanned. With a fast scan speed of up to 10fps and intelligent algorithms minimizing stitching errors, the MINI brings users a truly precise, stable, and smooth industrial-level small object 3D scanning experience.



Blue Light Scanning

Get better scans in ambient light with MINI's professional-grade ultra-high-resolution structured blue light technology. The MINI's class 1 blue light is harmless to humans and can be scanned directly on the skin, making it safe for all possible applications.

High Precision Scanning

Capture every detail of even the tiniest parts with MINI's industrial-grade precision of up to 0.02mm and output high-accuracy ready-to-print 3D models with a point cloud density of up to 0.05mm.

Smooth Scanning

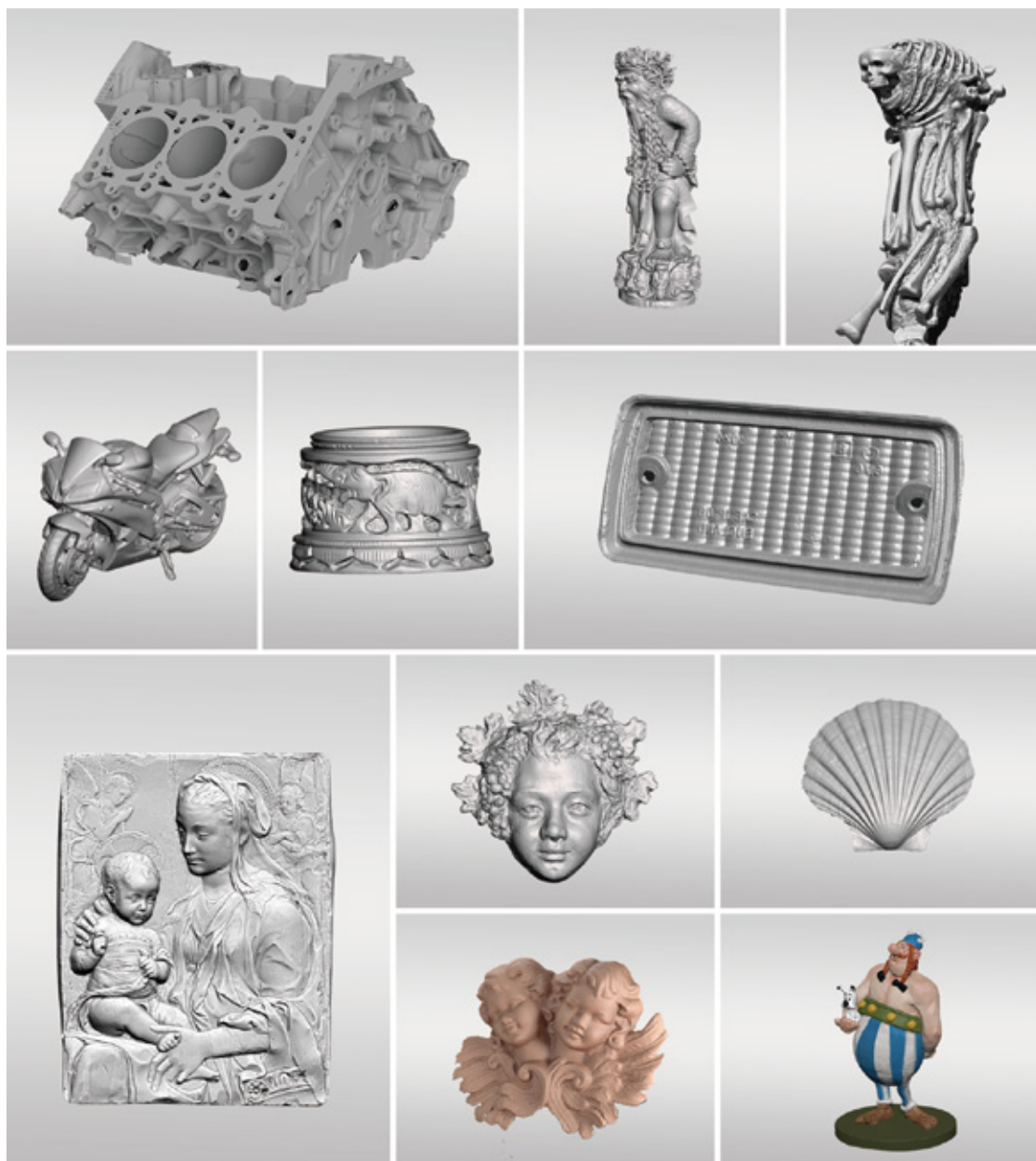
MINI's 10fps scanning rate and powerful algorithm significantly reduce stitching errors. And its onboard chip enables 3D models to be output in real time.

Portable Scanning

MINI is compact and weighs only 160g, making it easy to move around and scan, even for new users.

Applications

MINI meets the 3D modeling needs of multiple scenarios, including reverse engineering, digital processing of fossils and artifacts, jewelry design, medical applications, 3D animation, industrial inspection, and more.



Specifications

Product Name	MINI 3D Scanner
Technology	Binocular blue light
Single-frame Precision	Up to 0.02mm
Single Capture Range	64mm x 118mm
Working Distance	100mm – 200mm
Minimum Scan Volume	10mm × 10mm × 10mm
Frame Rate	10fps
Point Distance/Resolution	0.05mm
Light Source	Class I blue light
Alignment Mode	Feature stitching, marker point stitching
Output Formats	PLY, OBJ, STL
Color Scanning	Yes
Scanning Environment	Indoor
Scanner Weight	160g
Scanner Size	120mm x 38.5mm x 25mm
Compatible with 3D Printing	Yes
Compatible Systems	Windows 10/11 (64-bit), Android, iOS, MAC
Wi-Fi	Wi-Fi 5
Interface Type	Micro-B – Type-A USB

- Notes**
1. Accuracy was acquired in a controlled lab environment. Actual results might vary, subject to the operation environment.
 2. iOS devices only support Wi-Fi connection.
 3. Class 1 Laser: Avoid direct eye exposure for extended periods! Refer to Standards for Class 1 Lasers for details.