


Perform a measurement on an image

- 1 In the [Image] tab, select an image on which you want to realize a measurement

Example: image taken with the 20x objective and 10x eyepiece of the microscope

- 2 Click  [Calibrate Table] to open the calibration table

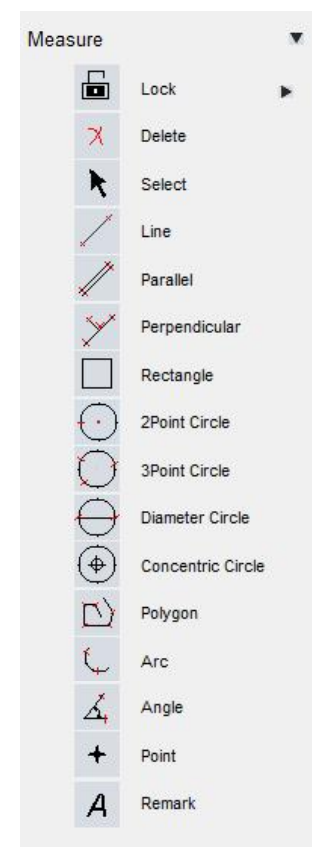
- 3 Select the magnification that corresponds for the selected image

Name	Length	TotalPixel	Unit	Unit/Pixel
default	1.00	1.00	pixel	1.0000
40x	1000.00	1208.00	um	0.8278
100x	400.00	1209.00	um	0.3309
200x	150.00	906.00	um	0.1656
400x	50.00	625.00	um	0.0800
1000x	30.00	904.00	um	0.0332

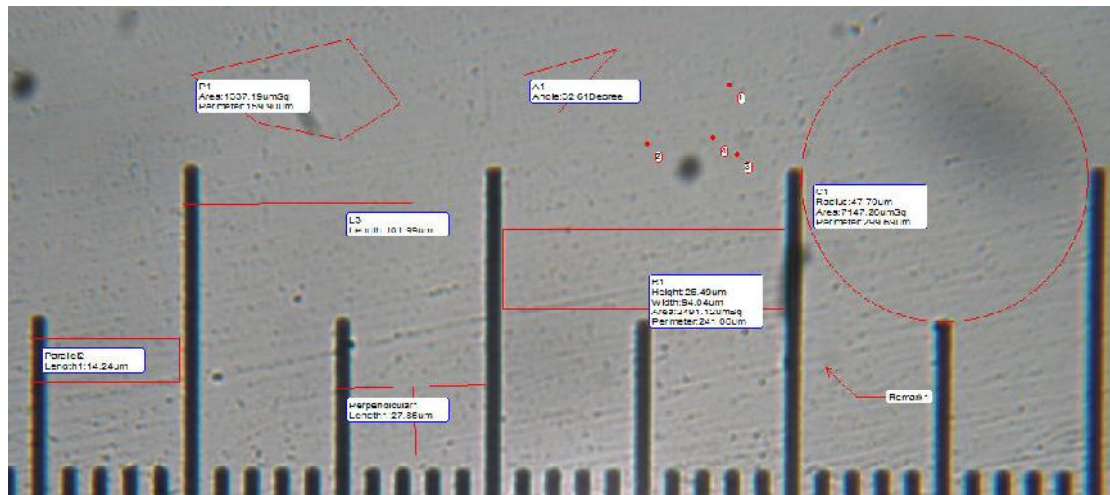
Apply to Image Close

- 4 Click on “Apply to image” and “Close”
- 5 Choose one of the available measurements

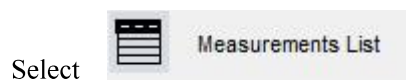
Line
 Parallel line
 Perpendicular lines
 Rectangle
 2point Circle
 3Point Circle
 Diameter Circle
 Concentric Circle
 Polygon
 Arc
 Angle
 Point
 Remark (for adding a label with remarks)



6 Perform your measurement on the image



Measurement List -



Measure Table							
Name	Length_um	Width_um	Height_um	Area_um^2g	Perimctor_um	Radius_um	Angle
L1	612.73						
Parallel1	734.60						
Perpendicular1	462.92						
R1		449.58	359.67	161700.66	1618.50		
C1				420057.97	2297.52	365.66	
P1				225746.95	2283.12		
Arc1					440.31	175.46	140.79
A1							20.92
Remark1							

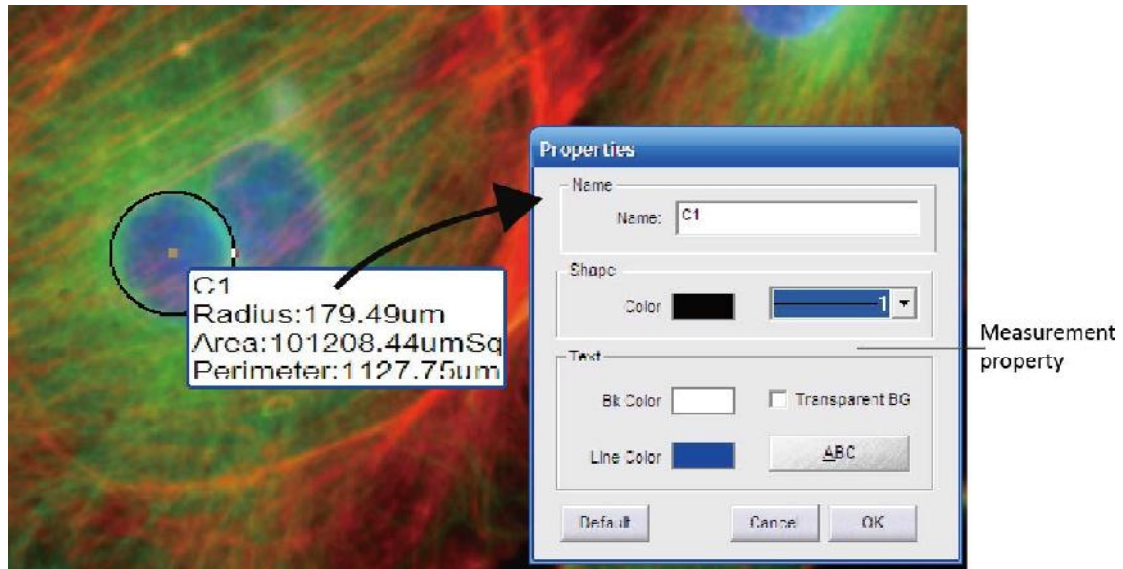
Export the measurement data to .txt file

Export the measurement data to Excel file

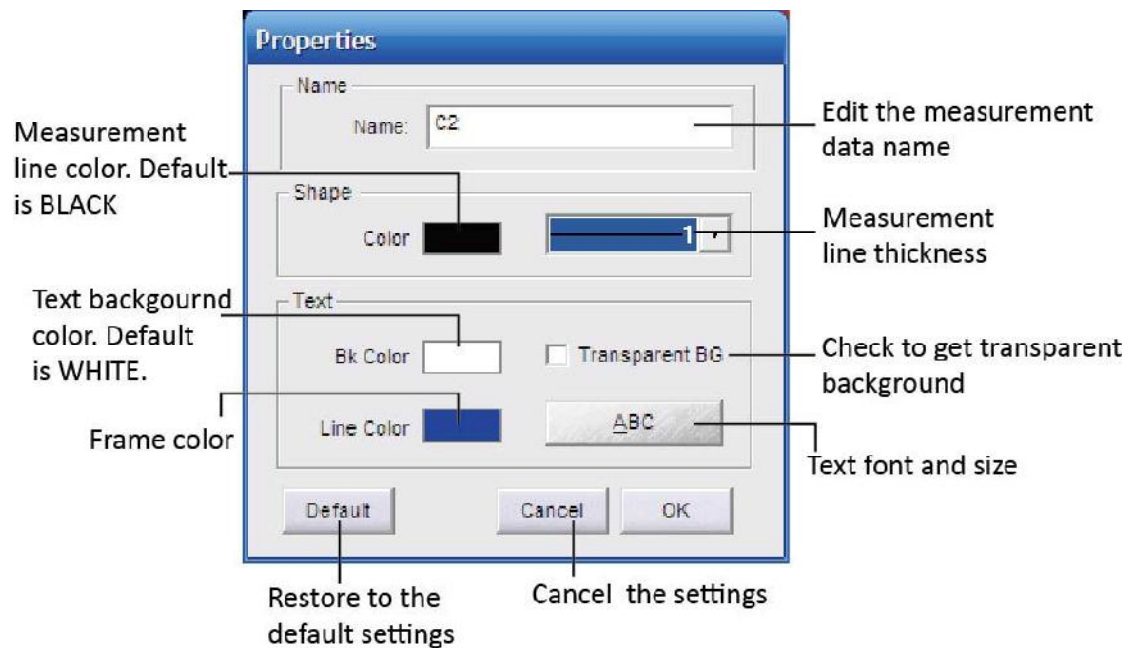
Copy all the measurement data to a file: txt, word or excel.

All measurements done on the image is kept in this table. You can export all the measurement data to the [TXT](#) or [Excel](#) file

Measurement properties

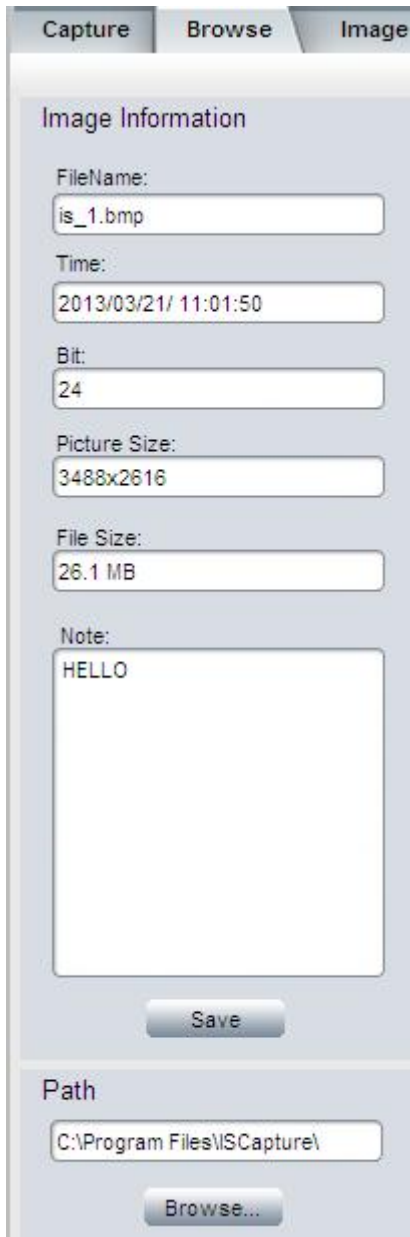


Double click on the measure to edit the properties of a measurement. You can change the measure properties like name, color, thickness, background color and the character font, etc ...



Browse tab

Under the [Browse] tab, you can see the image File name, capturing time, data depth (bit), picture resolution and image size. It also allows to [add comment to any individual image](#)



The screenshot shows a software interface with three tabs: 'Capture', 'Browse', and 'Image'. The 'Browse' tab is active. Below the tabs is a section titled 'Image Information' containing several input fields: 'FileName:' with the value 'is_1.bmp', 'Time:' with '2013/03/21/ 11:01:50', 'Bit:' with '24', 'Picture Size:' with '3488x2616', and 'File Size:' with '26.1 MB'. Below these fields is a 'Note:' section with a text area containing 'HELLO'. A 'Save' button is located below the note field. At the bottom of the form is a 'Path' section with a text field containing 'C:\Program Files\ISCapture\' and a 'Browse...' button.

Under the Image Tab there are some quick functions on the right hand side of the software

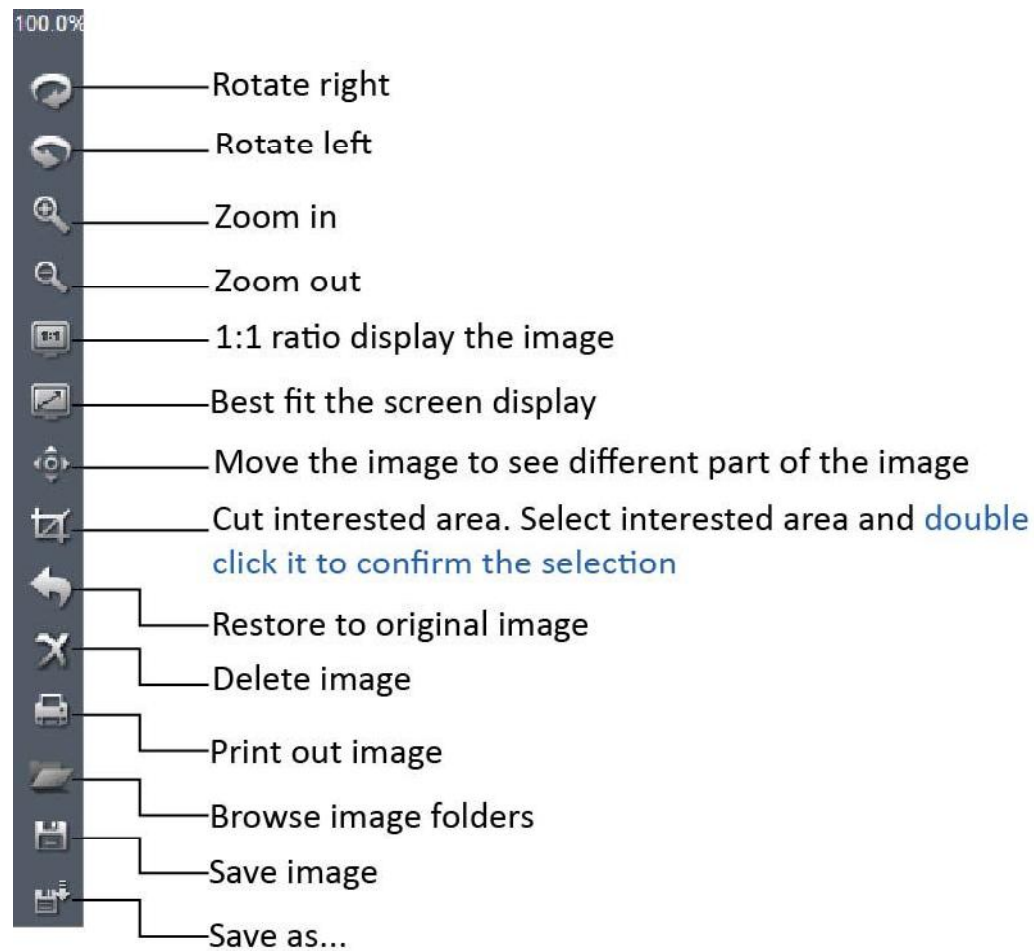
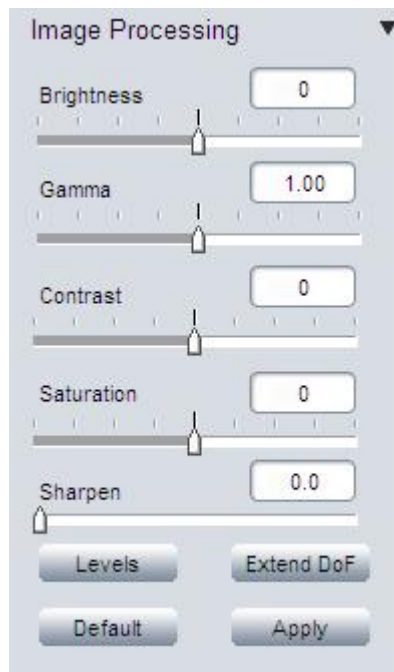


Image Processing



CAUTION

When you click [Apply], all the changes are applied to the image ! These changes **CAN NOT BE RECOVERED**

Provide some basic stilled image processing functions and allows to [extend the Depth of Focus](#).

Brightness	Adjust captured image brightness. Default brightness = 0
Gamma	Adjust captured image gamma. Default gamma = 1.00
Contrast	Adjust contrast. Increase the contrast, the shadows become darker and the highlights brighter. Decrease the contrast, the highlights grow dim and the dark areas lighten up
Saturation	Adjust the color saturation. Fully-saturated colors are very bright, while low saturation are grayish.
Sharpen	Adjust the image sharpness. Sharpness is the contrast on the edges. Sharpening increases the bright and dark lines on edges.
Levels	Adjust image levels. Get more details in [Fluorescence]>>[Levels]
Extend DoF	Extend the Depth of Focus (DoF)
Default	Restore Brightness, Gamma, Saturation, Sharpen and levels back to the default value
Apply	Confirm to apply all the settings to the image.