

Product Change Notification

Subject

Improved image clarity, depth acquisition, and FLC's adjustability.

Product Affected

Dino-Lite Edge 3.0 AM73915MZT and AM73915MZTL(RA).

Description of Change

Focusing lens

In the affected products, there is a focusing lens for fine adjusting the focus position electrically. A new focusing lens is adopted to improve system optical resolution and to provide finer focus adjustment. Three major advantages come with the focusing lens:

- Sharper images (see image comparison in Appendix-I)
- More detailed EDOF images resulting from the finer focus adjustment and optics improvement (see image comparison in Appendix-II)
- Depth acquisition (DPQ) capability on live preview provides a simpler and more accurate way to obtain depths with the finer focus adjustment

Note: DPQ now only available with DinoCapture 2.0.

FLC adjustability

A new FLC version, named eFLC (enhanced FLC), provides more illumination control to obtain better images. With eFLC, users may assign LED quadrants to one of two sets, each with 32 levels of adjustability, providing more flexibility for balancing the target's illumination (see "How to use eFLC" document for more information).

Note: eFLC now only available with DinoCapture 2.0.

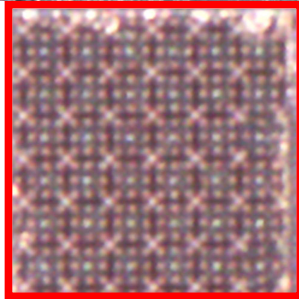
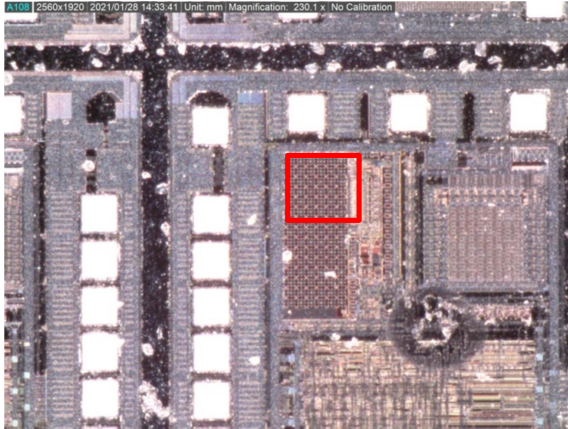
The part number of AM73915MZT and AM73915MZTL(RA) will be changed to AM73915MZT(R10) and AM73915MZTL(R10A), respectively.

For any questions regarding these modifications, please contact your AnMo sales counterpart.

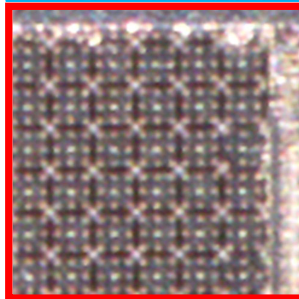
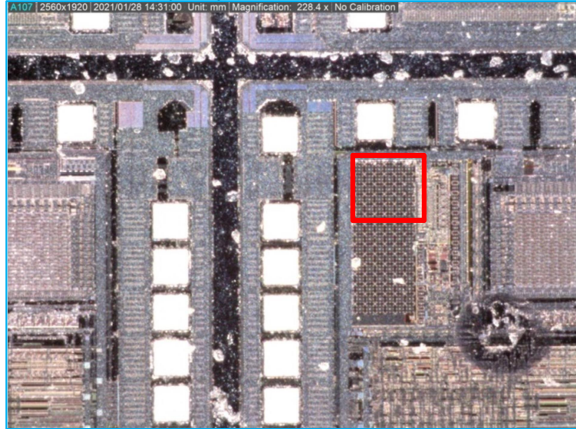
Appendix-I

Image comparison before and after change

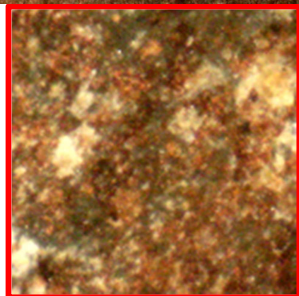
AM73915MZT



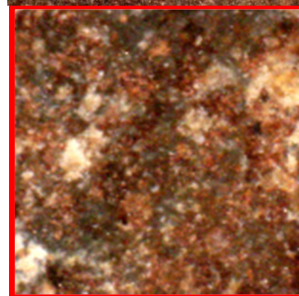
AM73915MZT(R10)



AM73915MZTL(RA)



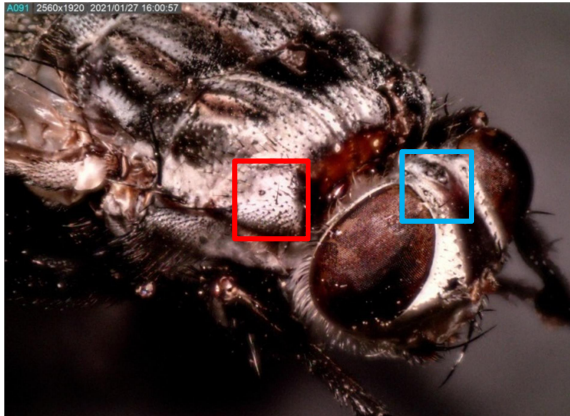
AM73915MZTL(R10A)



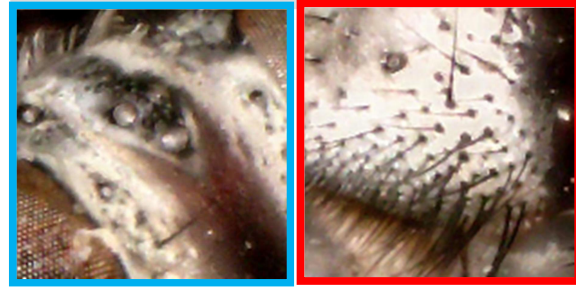
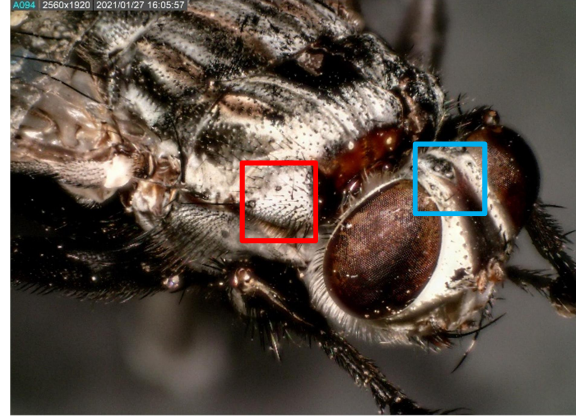
Appendix-II

EDOF's image comparison before and after change

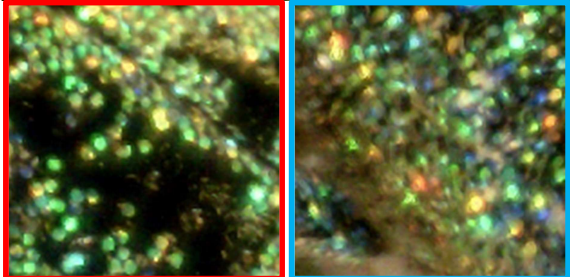
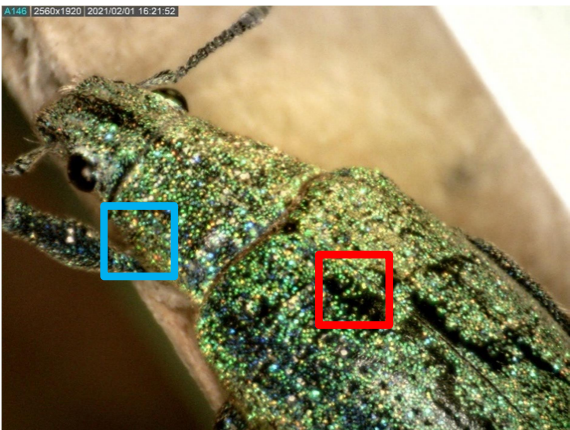
AM73915MZT EDOF image



AM73915MZT(R10) EDOF image



AM73915MZTL(RA) EDOF image



AM73915MZTL(R10A) EDOF image

