

COANTEC



Coantec C50 series Coantec Ultra HD Mega Pixel Industrial Videoscope

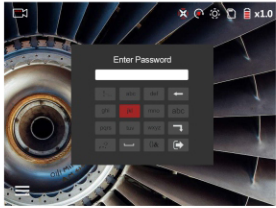


New Core, New Horizon
Ultra HD, Ultra Low Price
Superior Quality, High Service



✓ Excellent Performance

Ten Prominent Software Features



Secure password protection

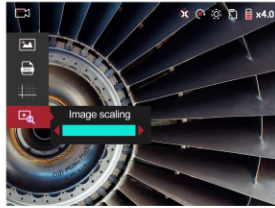
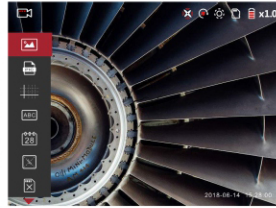
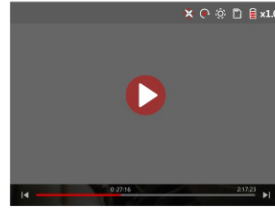


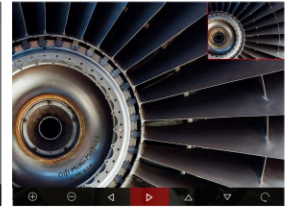
Image real-time zoom



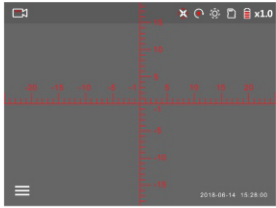
Real-time video capture



Video play fast forward and rewind



Picture-in-picture navigation display



Cross cursor reference

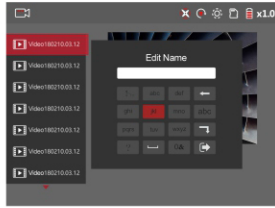
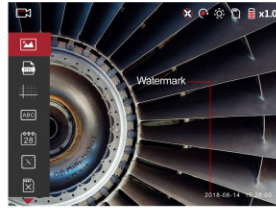


Image file renaming and labeling



Add watermark



Real-time detection screen up and down flip



Video picture classification storage

Four Prominent Hardware Features



Daylight display with full new intelligent software system

The C50 series features an LCD daylight display that is clearly visible in the sun. The new human-computer interaction software is more human, scientific, more powerful and more comfortable.

Million pixels HD camera, excellent image processing technology

Miniature 720P HD image sensor makes the image more delicate and the color more realistic, the image is uncompressed, the resolution is up to 1280*720, and every real detail is restored.

HDMI HD video output

Equipped with HDMI video output interface, connected to the PC through a dedicated data cable, suitable for expert consultation, helping to quickly find the defect of the detected object.

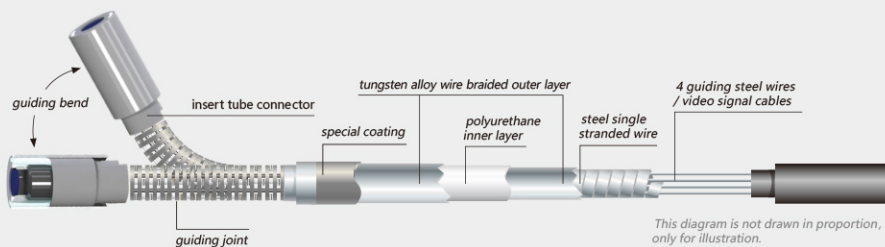
100,000 Lx super light + Large field of view

Illumination is 50 times higher than that of ordinary endoscopes. It is suitable for dark and harsh environments. It has 8 levels of brightness adjustment function. The light source can be adjusted according to the environment during the testing. With a larger depth of field and a larger angle of view, even first-time users can get good visual effects.

✓ Excellent Quality



Double tungsten alloy braided insert tube of 4 layers
Oilproof, waterproof, wearable and durable
Stable and reliable laser welding process



This diagram is not drawn in proportion, only for illustration.

The probe part of the insertion tube adopts at least 21 points of laser welding process. This process is more reliable for quality requirements. Each point requires precise use of professional laser instruments to weld in place. The precise manufacturing process makes C50 series more powerful and stable for operating performance.

The insertion tube is woven with tungsten alloy wire, which has a tighter braiding layer than the stainless steel wire insertion tube, which improves the wear resistance of the insertion tube by 20 times and effectively prolongs its service life.

The C50 Series camera uses sapphire protection lenses to effectively prevent the lens from being damaged twice.

✓ Easy Operation

Intelligent Navigation Menu

The navigation menu design is simple and clear, easy to understand and easy to use, novices can get started without training.

Support ten languages: Simplified Chinese, Traditional Chinese, English, Japanese, Korean, German, French, Portuguese, Spanish, Russian.

0.1 second automatic exposure, automatic noise reduction, fast capture of the real details of the detected object, and feedback through high-definition pictures.

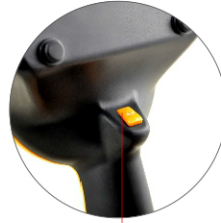


Photo / video button
Ergonomic design-easy operation



Compact design, superior product performance, and easy-to-use operation with one hand, giving you an unprecedented ease of use.



Intelligent and Humanized Design Multi-function Joystick



The unique rocker closed-loop control technology enhances the bending sensitivity and steering control of the probe for more precise operation.

The multi-function joystick has one-key lock, step-by-step fine adjustment, fast and slow adjustment, automatic reset, OK confirmation, menu navigation function, making inspection work easier.

✓ Lightweight and Portable



Complete accessories, long-lasting battery life

One hand-held design, the whole machine (with battery) weighs only 1.35kgs, optional leather shoulder bag, safe and portable, Whether it's checking the fan gearbox on a 100-meter tower or a complex large machine, the C50 Industrial Videoscope is designed to make it easier to use.

The outer packaging is made of industrial grade anti-drop design. It is light and easy to carry. It can be easily placed in the luggage racks such as airplanes, high-speed rails and trains during business trips. The internal design is compact and sturdy, with both solid and solid protection.

The C50 Videoscope guarantees endurance from multiple angles. It uses low-energy technology in product design to achieve a battery life of 4 hours and is equipped with a set of spare batteries to support long-term inspection.

Camera	
Probe Diameter	φ 4. 8mm/ φ 6mm/ φ 8mm
Pixels	1,000,000 Pixels
Probe Material	Hard titanium alloy protective casing
Depth of Field(Direct View)	5-180mm;10-100mm
Depth of Field(Side View)	3-30mm
Field of View(Direct View)	110°/120°Optional
Field of View(Side View)	70°/90°Optional
Visible direction	Standard direct view lens (side view lens optional)

System	
Integrated design	Probe,Screen,Insert Tube,Handle,Battery and other integrated handheld design
Insert Tube	Four-layer tungsten wire wear-resistant braided tube
Effective Working Length	1.5-10m
Bending Control Mode	Electric control
Probe Articulation	360°all-way
Bending Lock	One-key Lock
Step Regulation	Step regulation between high-speed and low-speed bend
Bending Speed Control	Fast/Slow
Bending Angle	Within 5m≥160°,Above 5m≥120°
Light Type	Front LED light or Rear-mounted LED Fiber light (≥3w hour)
Illumination	Front LED light with max 20000lx,Rear-mounted LED Fiber light with max 100000lx
Image enlargement	Support real-time 4x zoom, 8x partial zoom when the picture is viewed
Bright Adjustment	Manual, 8 levels
Display	5-inch LCD daylight display
Image Resolution	1280*720/960*720
Video Resolution	1280*720
Shooting and recording function	With camera and video functions,Can be captured during recording
System security	With power-on password unlock function
Image mode	Color, black and white, negative
Auxiliary measurement	Cross cursor
File editing	File can be renamed and add company logo
File Format	Picture: BMP/JPEG; Video: MP4
Video playback	Fast forward and rewind functions
Image flip	180°
Image preview	Two modes for the list and the nine-square grid, the full-screen viewing/deletion/ file name editing/adding notes operation, time watermark, and picture-in-picture guidance function can be performed in the preview mode.
Memory	Standard 8G SD card,Support 32G at maximum
Equipment durability protection device	Buffer protection device for connecting host and insert tube
Emergency lighting	Glare LED emergency lighting
Insert Tube	Oil and corrosion resistant

Host	
Host size	380mm*135mm*85mm
Host weight	≤1.35kgs(with batteries),The total weight depends on the length and diameter of the insert tube
Instrument case size	600mm*395mm*235mm
Output port	HDMI
Fall-resistant	1.2m fall-resistant
Insert tube protection device	130mm wear-resistant tube anti-twist protection tube
Working Time	≥4 hours,Endurance to 8 hours

Operation Environment	
Host System Working Temperature	-10°C-50°C,when 0°C below, the display needs preheating.
Camera Working Temperature	-20°C-75°C,when 0°C below, please reduce oriented operation.
Dustproof, waterproof	Insert Tube IP67
Store Temperature	-20°C~60°C
Relative Humidity	15-90%

Accessories	
Standard Configuration	Instrument case,C50 videoscope,2 sets of batteries,card reader,8G SD card, charger,file documents
Optional	HDMI cable,Hand-held casing,High-grade instrument case (with insert tube storage tray),Lens storage box

Remark:

Depth of field can be customized according to user's requirements;
Insert Tube and tube diameter can be customized according to user's requirements;
Software features can be customized according to user's requirements.

If you need to customize, please call: +62 855 17000 51



Industrial endoscope-Application areas

C50 series borescopes are widely applied in the field of special equipment inspection, electric power, car manufacturing, automotive aftermarket, petrochemical, machinery, aviation, shipbuilding,rail transportation, food medicine machine, mold manufacturing, machinery processing,police safety, military equipment,university research, etc.

For more information :

- Energy industry**
 For nuclear power plant,wind power plants, hydroelectric power plant, power plant, electric power construction unit testing equipment, such as turbines, set equipment box, pipe, condenser pipe, pump, boiler, heat exchanger, valves, pressure vessel defect detection, Detection Inspection and maintenance.
- Petrochemical industry**
 Used for storage tanks, heat exchangers, spherical tanks,cars,chemical industry pipeline facilities, special inspection units and pressure vessel production units, such as containers,cylinders,pipes and other internal defects inspection and inspection.
- Aerospace**
 For aircraft engine combustion chamber,and the weld surface, with the surface of the catheter, aircraft and other parts of the turbine blades,regular inspection or maintenance, and other aircraft, rocket,aerospace research and development,mold manufacturing.
- Automobile manufacturing**
 Used to inspect the engine block,cylinder head,turbine,transmission,exhaust pipe,valve body, pump body,control module,oil pressure component,nozzles and other parts of the quality control and vehicle assembly inspection.
- Machine building**
 Used for automobile parts casting, hydraulic casting,pump body,valve casting,mechanical parts casting,pipe fittings casting,used for checking casting,sand inclusion,burr and other quality control.
- Special inspection industry**
 Used for boilers, pressure vessels,presure pipes,gas cylinders,petroleum and petrochemical storage tanks,boilers,header,water wall and gas cylinder inspection,presure pipes on welds,pipe wall cracks, pipes, foreign bodies and so on.
- Food medicine machine**
 Used in the manufacture and installation of food,beverage, biological fermentation, pharmaceutical industry,inspection containers,pipes,welding scars, weld formation and cleanliness,maintenance in installation and use.
- Police safety**
 Used in public security,armed forces inspection institutions,fire units and other units to carry out explosion-proof security,city anti-terrorism,customs inspection,life detection, etc..
- Military equipment**
 For missiles, warships,submarines,aircraft,armored vehicles,diesel engine,barrel and other equipment manufacturing quality control and maintenance.
- After auto market**
 For car maintenance,car 4S shop,chemical industry,on the engine combustion chamber, nozzle, valve, piston and three Yuan catalysis,evaporation tank,pipeline and gap check.

If the technical parameters are changed,please refer to the actual product;there will be no prior notice.All products are trademarks or registered trademarks of the owner of the products.