



Vol. 01-2020



VISUAL

Technology

for SCIENCE





Microscope.id berawal tahun 2017 dan telah sukses dipercaya oleh ratusan pelanggan kami secara nasional meliputi profesional science, industri dan pemerintahan.



Visi

Mewujudkan solusi terbaik dengan mikroskop dengan analisa visual dan measuring system.

Misi

Memberikan solusi dan konsultasi terbaik untuk pelanggan kami.

Nilai :

- **Pengetahuan (Knowledge)**
- **Solusi (Solution)**
- **Kepuasan pelanggan (Customer Satisfaction)**

Layanan visual kami meliputi layanan analisa masalah dan pengembangan produk serta pengukuran dengan teknik visual (gambar) menggunakan produk mikroskop dan visual measuring system.

Solusi kami berikan adalah konsultasi melalui product demo, email, telephone dan live chat.

Dino-Lite

Mikroskop digital Dino-Lite adalah perangkat mikroskop portabel yang luar biasa dan mudah digunakan untuk inspeksi, pengujian, dan dokumentasi. Saat gambar ditampilkan pada monitor HP ataupun PC, pengguna dapat memeriksa dan menganalisis gambar bahkan melakukan pengukuran dimensi objek yang dilihat.

Berbagai fitur pada software Dino-Lite merupakan hasil perkembangan yang luar biasa seperti transparent mode, edge tracking, snap mode measurement dan comparison.

All Models Include

1 YEAR WARRANTY • FREE TECH SUPPORT

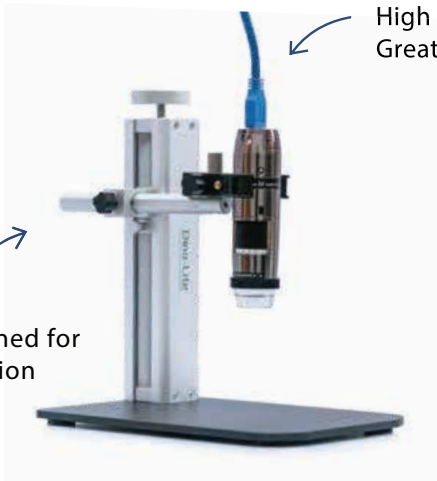
At the Booth

AF4915ZT + WF20
USB & Wireless

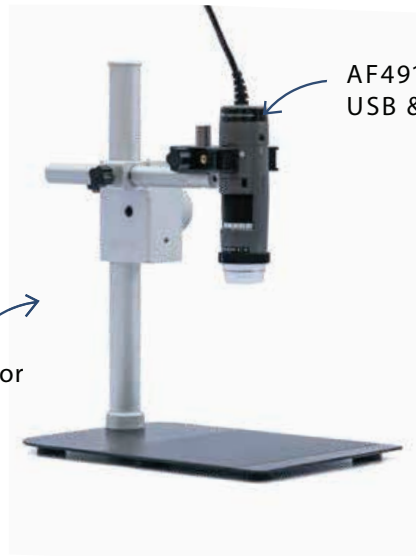


AM73915MZT
High Resolution &
Great Frame Rate

RK10
Designed for
Precision



RK-06
Designed for
Versatility



AF4915ZT
USB & Wireless Ready

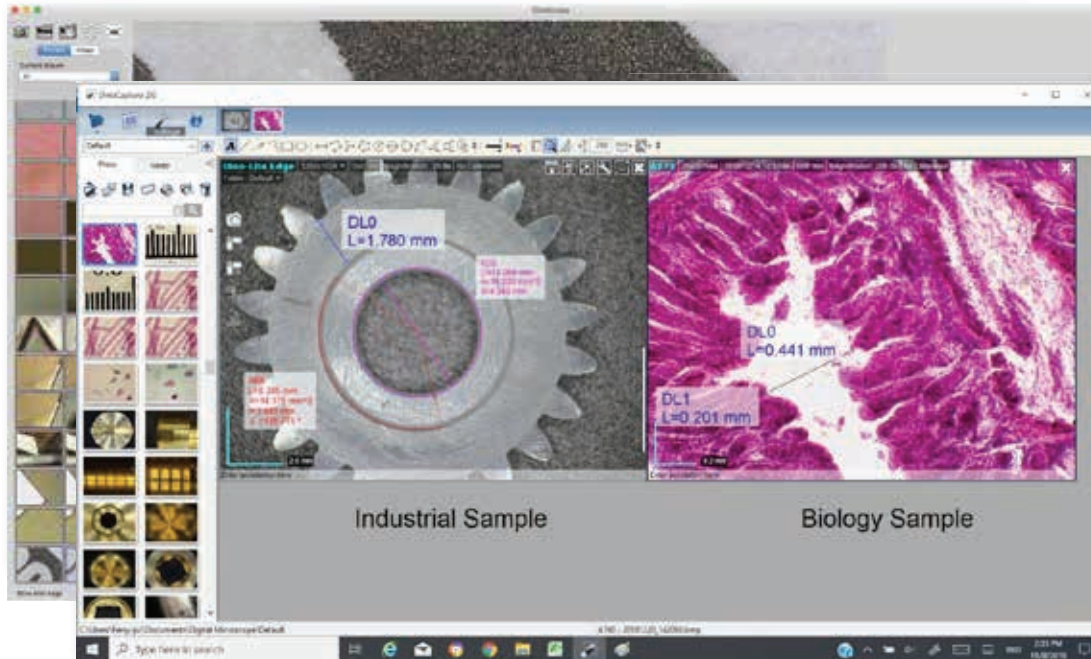
Visit us online at microscope.id

- Product Demos
- Training Videos
- Tech Support
- Products Information
- Software Updates
- Specification Information
- ... and more !

Key Features

Capture Images & Video

Easily save images, videos, and time-lapse videos using the included license-free software.



Preview Window Tools

- Snapshot
- Video Recorder
- Time-Lapse Video
- EDR-Extended Dynamic Range *
- EDOF-Extended Depth of Field *
- Microtouch *
- White Balance *
- Auto Exposure Setting
- LED Control *
- Flexible LED Control *
- Camera Adjustment Setting
- Maximize Window
- Close Window

* Feature can only be found on specific Dino-Lite models.

Adjust Image Settings

Use the software settings panel to adjust lighting, colors, brightness, contrast, and other settings.

Connectivity Types

Available connection types include USB 2.0, USB 3.0, TV(RCA), VGA, and HDMI.

Magnification Ranges

Our standard magnification range is 10x-220x. Select models go up to 900x.

Housing Types

Our ABS and medical-grade plastic bodies are very reliable and strong. For enhanced protection, the metal body consists of aerospace grade machine tooled aluminum.

Lighting Control

Sometimes light can be a damaging factor. Many Dino-Lite models have a built-in adjustable polarizer for reducing glare. Diffuser caps, lighting accessories, and exposure adjustments also help to achieve optimal results.

Measurement & Annotation

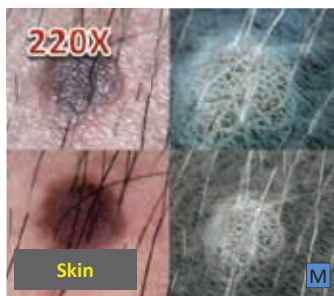
Most models have measurement capability for lines, circles, angles, and more. Snap measurements to any edge for ease of use. You can also add annotations for easy file organization.

Special Lighting - IR/UV/Fluorescence

Models are available with fluorescence, UV, and IR. A small sample is listed here. Contact us for more information.

Series	Excitation Wavelength	Emission Filter	Series	Excitation Wavelength	Emission Filter
FUW (UV)	375nm	N/A	YFGW	525nm	570nm
GFBW	480nm	510nm	DFRW	620nm	650nm
GRFBY	480/575	510/610	FJT (IR)	940nm	N/A





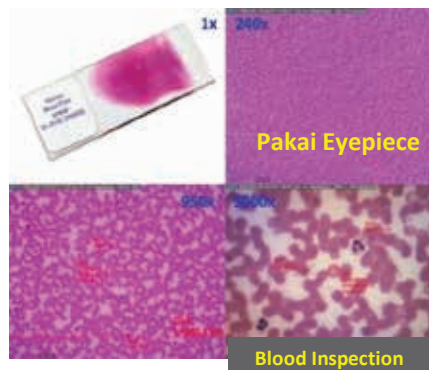
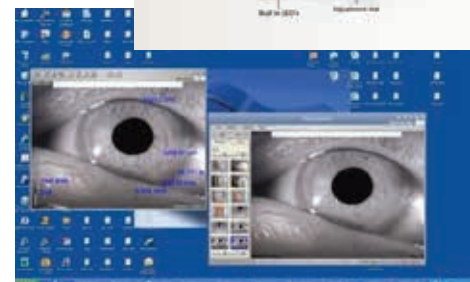
Aplikasi :

- *Analyze Dermatology*
- *Inspection*
- *Medical*
- *Ophthalmology / Iridology*
- *Pathology*
- *Ear, Nose & Throat*

Para profesional medis di semua spesialisasi menggunakan berbagai kamera mikroskop Dino-Lite untuk memeriksa pasien dan mendokumentasikan apapun yang ingin dilihat.

Ada alat khusus untuk membantu Kedokteran Gigi, Oftalmologi, dan Otoskopi membantu memberikan gambar dan dokumentasi yang sangat baik dibandingkan peralatan medis tradisional.

Dino-Lite USB dapat digunakan dengan perangkat lunak DinoCapture gratis, atau dengan sebagian besar perangkat lunak Electronic Medical Records (EMR) Custom software.



High Series 230X



AM4515T8
700x~900x | 1.3MP | USB2.0
AMR | Plastic Housing | Measuring
Gambar & Video | Magnification Locked



RK10VXEXFPX
Professional Stand
22 cm (L) x 15 cm (W) x 23 cm (H)



S2-M2
Petri Dish Holder | Dimension
27.5 cm (L) x 15 cm (W) x 4 cm (H)

Mid Series 200X



AM4915ZT
20~220X | 200X | 1.3MP | USB2.0/WIFI
ESD Safe | Plastic Housing | EDOF | EDR
Measurement | Gambar & Video | Polarizer



HDE-01
Adjustable Holder |
180G include rest plat

Basic Series 200X



AF3113T
20x~50x, 200x | VGA (640x480)
USB2.0/WIFI | Color CMOS | Plastic Housing
Measurement | Gambar & Video



RK-05
Moveable X 30 Degree |
14cm (L) x 11cm (W) x
16.5cm (H)



WF-20
Wi-Fi Streamer | 20M range
Windows, Android, iOS | 180 minutes

Eyepiece Series

untuk Bino / Trinocular



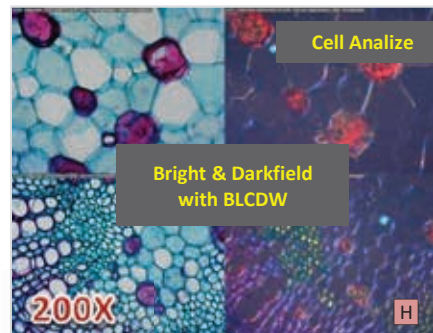
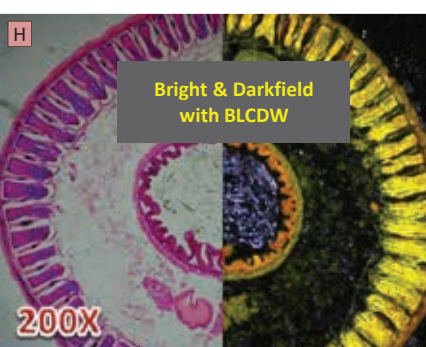
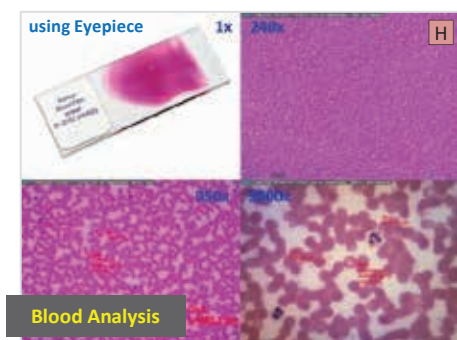
Euromex Calibration Scale
AE-110CALIB 1mm/100 (AE-1110)



Dino-Eye AM7025X
5MP | USB2.0
Measuring | Gambar & Video
23mm, 30mm, 30.5mm diameter adaptor

Aplikasi :

- Breeding Spores Research
- Zebra Fish Research
- Nanoparticle Research
- Stem Cell Research
- Fluorescence Guide Surgery
- Etc ...



Mikroskop portabel Dino-Lite sebagai portable mikroskop satu satunya yang mempunyai cahaya Fluorescence. Mudah untuk di bawa-bawa dan dapat terhubung dengan handphone dan PC untuk melakukan penyimpanan gambar dan pengukuran. Berbagai gelombang tersedia. Hubungi kami untuk informasi.



High Series 950X



AM7515MT8A
700~900X | 5MP | USB2.0 | FLC
Measuring | Gambar & Video
Brightfield / Darkfield | AMR



RK10VXEXFPX
Professional Stand
22 cm (L) x 15 cm (W) x 23 cm (H)



S2-M2
Petri Dish Holder | Dimension
27.5 cm (L) x 15 cm (W) x 4 cm (H)

Mid Series 200X



AM4915ZT
20~220X | 200X | 1.3MP | USB2.0/WiFi
ESD Safe | Plastic Housing | EDOF | EDR
Measurement | Gambar & Video | Polarizer



RK-06E
Professional Stand
22 cm (L) x 15 cm (W) x 27 cm (H)



WF20
Wi-Fi Streamer | 20 m range
Windows, Android, iOS | 180 minute

Fluorescence Series 200X



AM4115T - GFBW* / GRFBY*
AM4115T - DFRW* / YFGW* / CFVW*
20~220X | 1.3MP | USB2.0
ESD Safe | Plastic Housing
Measuring | Gambar & Video | Polarizer



BLCDW
Bright & Dark field Lighting
5.1cm (H) x 5.4cm (Dia)



MS15X-S2
Inspection Stage | 5 cm diameter
10 cm long x 8 cm wide | Vernier Scale

Eyepiece Series untuk Trinocular



Euromex Calibration Scale
AE-110CALIB 1mm/100 (AE-1110)

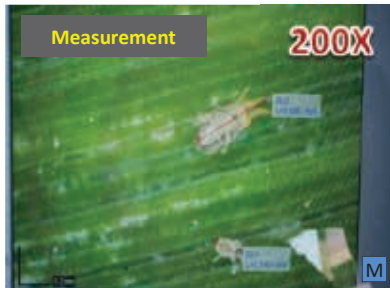


Dino-Eye AM7025X
5MP | USB2.0
Measuring | Gambar & Video
23mm, 30mm, 30.5mm diameter adaptor



Setiap perusahaan produksi pertanian, hortikultura atau florikultura bertujuan untuk meningkatkan pertumbuhan tanaman dan bertujuan untuk membuat proses pertumbuhan se-efisien mungkin.

Salah satu tantangannya adalah menghindari hama untuk merusak pertumbuhan tanaman dan menghancurkan tanaman. Kutu hama dapat menyebabkan jatuhnya daun prematur, kerusakan tunas dan kematian seluruh tanaman, dengan dampak kerusakan ekonomi yang besar. Mikroskop portabel Dino-Lite sebagai portable mikroskop satu satunya yang mempunyai solusi mudah untuk di bawa-bawa dan dapat terhubung dengan handphone untuk melakukan penyimpanan gambar dan pengukuran



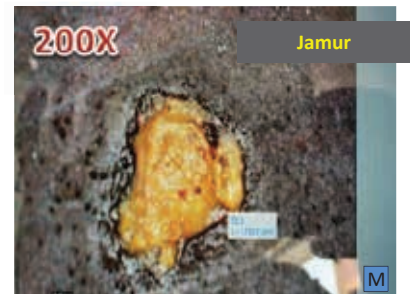
Extra Deep Of Field
(Fokus segala bidang)

Aplikasi :

- Pencegahan Hama
- Pelestarian dan perlindungan tanaman
- Analisa pertumbuhan
- Perbandingan jenis
- Data dan pengukuran dimensi
- Pembelajaran dan riset



Education



High Series 950X



AM7515MT8A
700~950X | 5MP | USB2.0 | FLC
Measuring | Gambar & Video
Brightfield / Darkfield | AMR



RK10VXEXFPX
Professional Stand
22 cm (L) x 15 cm (W) x 23 cm (H)



MS15X-S1
Inspection Stage | 5 cm diameter
10 cm long x 8 cm wide | Vernier Scale

Mid Series 200X



AM4915ZT
20~220X | 200X | 1.3MP | USB2.0/WiFi
ESD Safe | Plastic Housing | EDOF | EDR
Measurement | Gambar & Video | Polarizer



RK-06E
Professional Stand
22 cm (L) x 15 cm (W) x 27 cm (H)



WF-20
Wi-Fi Streamer | 20M range
Windows, Android, iOS | 180 minutes

Basic Series 200X



AF3113T
20x~50x, 200x | VGA (640x480)
USB2.0/WiFi | Color CMOS | Plastic Housing
Measurement | Gambar & Video



RK-05
Moveable X 30 Degree |
14cm (L) x 11cm (W) x
16.5cm (H)



WF-20
Wi-Fi Streamer | 20M range
Windows, Android, iOS | 180 minutes

Eyepiece Series untuk Trinocular



Euromex Calibration Scale
AE-110CALIB 1mm/100 (AE-1110)



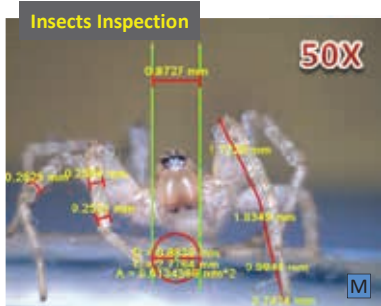
Dino-Eye AM7025X
5MP | USB2.0
Measuring | Gambar & Video
23mm, 30mm, 30.5mm diameter adaptor



Dino-Lite sebagai alat berharga untuk para peneliti, mahasiswa, atau kolektor, kamera mikroskop Dino-Lite dapat meneliti serangga baik yang menguntungkan / merugikan untuk dapat dipelajari lebih mendalam dan mudah dengan data.

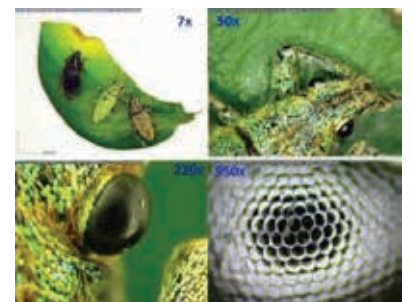
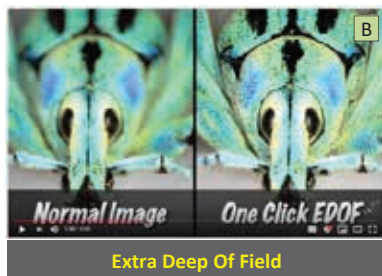
Pembesaran yang dihasilkan Dino-Lite adalah real sesuai dengan hasil optic yang ditampilkan ke layar digital. Brand terpercaya Nasional dan Internasional.

Mikroskop portabel Dino-Lite sebagai portable mikroskop satu satunya yang mempunyai cahaya Fluoresence. Mudah untuk di bawa-bawa dan dapat terhubung dengan handphone untuk melakukan penyimpanan gambar dan pengukuran



Aplikasi :

- Pencegahan Hama
- Pelestarian dan perlindungan serangga
- Analisa pertumbuhan dan kembangbiak
- Perbandingan jenis
- Data dan pengukuran dimensi
- Pembelajaran dan riset



High Series 450X



Mid Series 200X



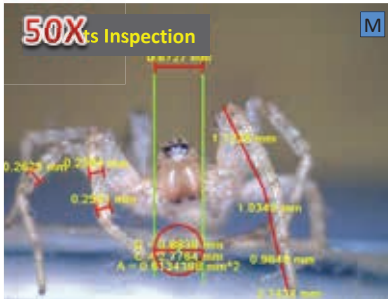
Basic Series 200X



Eyepiece Series

untuk Trinocular

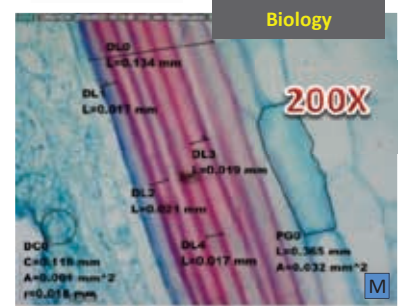




Kamera mikroskop Dino-Lite digunakan untuk menampilkan objek-objek yang kecil pada layar monitor. Ini dapat digunakan dalam ruang kelas sebagai alat pengajaran kelompok yang bermanfaat. Dengan Dino-Lite Basic ke PC dan Anda mendapatkan hasil instan di layar. Murid dapat mempelajari serangga, elektronik, kerajinan dan banyak lagi. Dino-Lite Basic memiliki kinerja harga yang membuatnya cocok untuk digunakan oleh siswa secara individu di kelas.

Aplikasi :

- Breeding Spores Research
- Zebra Fish Research
- Nanoparticle Research
- Stem Cell Research
- Fluorescence Guide Surgery
- Pest Control
- Etc ...



High Series 450X



AM7515MT4A
4150~470X | 5MP | USB2.0 | FLC
Measuring | Gambar & Video
Brightfield | Darkfield | AMR



RK10VXEXFPX
Professional Stand
22 cm (L) x 15 cm (W) x 23 cm (H)



MS15X-S2
Inspection Stage | 5 cm diameter
10 cm long x 8 cm wide | Vernier Scale

Mid Series 200X



AM4915ZT
20~220X | 200X | 1.3MP | USB2.0/WiFi
ESD Safe | Plastic Housing | EDOF | EDR
Measurement | Gambar & Video | Polarizer



RK06E
Professional Stand
22 cm (L) x 15 cm (W) x 27 cm (H)



WF20
Wi-Fi Streamer | 20M range
Windows, Android, iOS | 180 minutes

Basic Series 200X



AF3113T
20x~50x, 200x | VGA (640x480)
USB2.0/WiFi | Color CMOS | Plastic Housing
Measurement | Gambar & Video



RK-05
Moveable X 30 Degree |
14cm (L) x 11cm (W) x 16.5cm (H)



WF-20
Wi-Fi Streamer | 20M range
Windows, Android, iOS | 180 minutes

Eyepiece Series

untuk Bino/ Trinocular



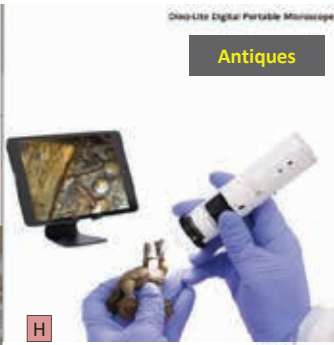
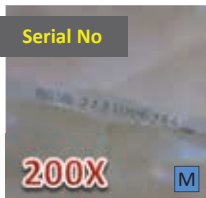
IS.1152Pli



IS.1153Pli



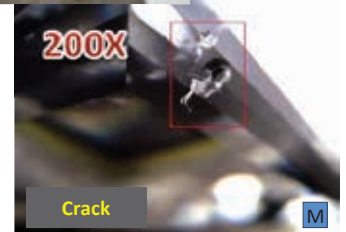
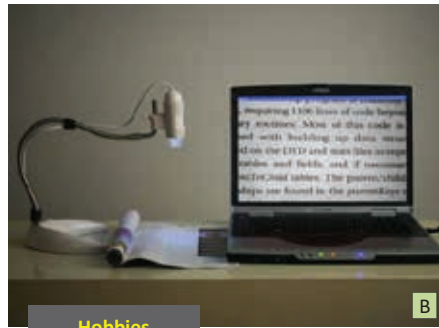
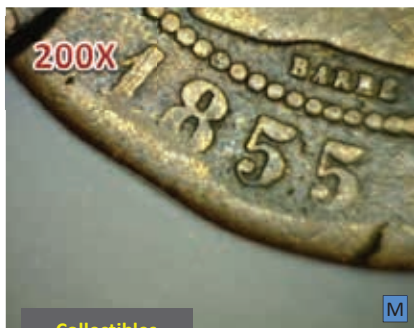
Dino-Eye AM7025X
5MP | USB2.0
Measuring | Gambar & Video
23mm, 30mm, 30.5mm diameter adaptor



Aplikasi :

- Jewelry
- Coin, Stamps
- Antiques
- Hobbies
- Watchmaking
- Museum
- Geology

Mikroskop Dino-Lite adalah alat bantu visual untuk berbagai macam perhiasan, koin, dan koleksi museum. Karena memiliki kemampuan untuk memeriksa berbagai macam batu, perhiasan, barang antik, lukisan berbagai benda purba dan moderen dengan lebih detail dilengkapi data foto dan hasil dimensi. Sudah banyak museum dan perusahaan tambang mempercayakan Dino-Lite untuk membuat data dan menyimpan untuk mencegah terjadinya manipulasi hasil dan duplikasi kejahatan. Dengan bantuan pembesaran kita dapat membandingkan setiap detail dari keaslian suatu benda.



High Series 900X



AM7515MT8A
700~990X | 5MP | USB2.0 | FLC
Measuring | Gambar & Video
Brightfield / Darkfield | AMR



RK10VXEXFPX
Professional Stand
22 cm (L) x 15 cm (W) x 23 cm (H)



MS15X-S1
Inspection Stage | 5 cm diameter
10 cm long x 8 cm wide | Vernier Scale

Mid Series 200X



AM4915ZT
20~220X | 200X | 1.3MP | USB2.0/WiFi
ESD Safe | Plastic Housing | EDOF | EDR
Measurement | Gambar & Video | Polarizer



RK06E
Professional Stand
22 cm (L) x 15 cm (W) x 27 cm (H)



MS33A & MS16J
Ergonomic Stand | Ring Holder mount

Eyepiece Series
untuk Bino/Trinocular



NZ.1903S



Dino-Eye AM7025X
5MP | USB2.0
Measuring | Gambar & Video
23mm, 30mm, 30.5mm diameter adaptor

Basic Series 200X



AF3113T
20x~50x, 200x | VGA (640x480)
USB2.0/WiFi | Color CMOS | Plastic Housing
Measurement | Gambar & Video



RK05
Moveable X 30 Degree |
14cm (L) x 11cm (W) x
16.5cm (H)

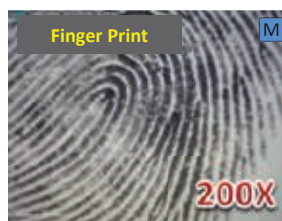


WF20
Wi-Fi Streamer | 20M range
Windows, Android, iOS | 180 minutes

Fitur perbesaran mikroskop Dino-Lite dengan UltraViolet dan Inframerah dapat membantu mendeteksi dokumen palsu, uang palsu, produk, dan barang-barang lainnya.

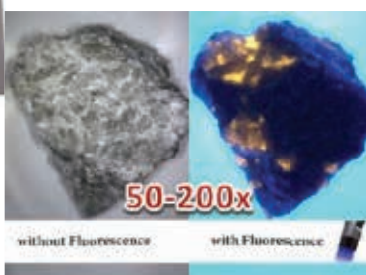
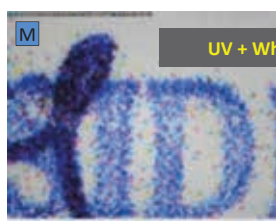
Produk palsu secara visual mirip dilihat oleh mata tetapi menipu pembeli sehingga tidak memberikan kualitas yang sama dengan asli dan dapat menimbulkan masalah keamanan.

Menggunakan Dino-Lite dapat membantu verifikasi keaslian komponen dengan memeriksa: inkonsistensi, kode tanggal tidak cocok, resurfacing, dan tanda-tanda asli lainnya. Kualitas Dino-Lite dirancang dengan spesial menghasilkan detail dengan sempurna dan mudah digunakan.



Aplikasi :

- Fake Money Detection
- Recognize Fake Medicine
- Recognize Fingerprint
- Counterfit Detection
- Handwriting Detection
- Etc ...



High Series 900X

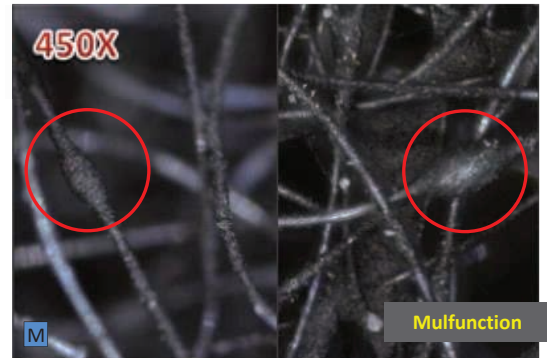
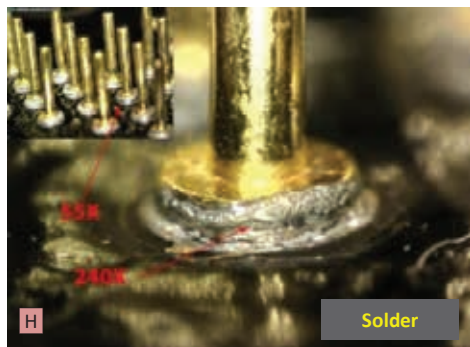
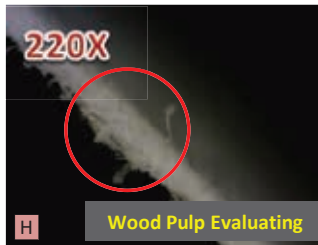


Mid Series 200X



Spesial Lighting





Aplikasi :

- Pest Control
- Wood Working
- Watch Repair
- Medical
- Skin Inspection
- Etc ...

Mikroskop Dino-Lite memberikan kemudahan para pengguna profesional pada fungsi pengukuran dengan gambar yang berkualitas tinggi.

Untuk item yang mungkin memiliki permukaan reflektif, kami merekomendasikan unit dengan pencahayaan terpolarisasi. Fitur polarisasi digunakan untuk mengurangi silau dan membantu menghilangkan 'titik panas' dari permukaan reflektif. Ini membantu memberikan pencahayaan seragam untuk membawa detail permukaan lebih banyak dengan silau minimal.

High Series 950X



AM7515MT8A
700~990X | 5MP | USB2.0 | FLC
Measurement | Gambar & Video
Brightfield | Darkfield | AMR



RK-10VXEXFPX
Professional Stand
22 cm (L) x 15 cm (W) x 23 cm (H)



MS15X-S2
Inspection Stage | 5 cm diameter
10 cm long x 8 cm wide | Vernier Scale

Mid Series 200X



AM4915ZT
20~220X | 200X | 1.3MP | USB2.0/WiFi
ESD Safe | Plastic Housing | EDOF | EDR
Measurement | Gambar & Video | Polarizer



RK-05
Moveable X 30° Degree |
14cm (L) x 11cm (W) x
16.5cm (H)



WF-20
Wi-Fi Streamer | 20 m range
Windows, Android, iOS | 180 minute

Basic Series 200X



AF3113T
20x~50x, 200x | VGA (640x480)
USB2.0/WiFi | Color CMOS | Plastic Housing
Measurement | Gambar & Video



RK-06E
Professional Stand
22 cm (L) x 15 cm (W) x 27
cm (H)



BLZW1
Light Inspection Stage | Polarizer
USB & DC adapter | 10 x 9 x 2cm

Eyepiece Series

untuk Bino / Trinocular



Life Science
Phase
contrast



AE-110CALIB



Metallurgy




Polarization



Euromex VC3036
5MP | USB2.0 & HDMI
Measuring | Gambar & Video

LIFE SCIENCE

 <p>EcoBlue</p> <p>EC.1152 EC.1153 Binocular Trinocular Achromatic NeoLED Total 40x, 100x, 400x, 1000x</p>	 <p>BioBlue</p> <p>BB.1152-PLi BB.1153-PLi Binocular Trinocular NeoLED 40x, 100x, 400x, 1000x</p>	 <p>iScope</p> <p>IS.1152 IS.1153-PLi Binocular Trinocular Brightfield Contrasts NeoLED 40x, 100x, 400x, 1000x</p>	 <p>BioBlue Phase Contrast</p> <p>BB.1153-PLPH Trinocular Rackless Mechanical Stage NeoLED 100x, 200x, 400x, 1000x</p>
 <p>Digital Monocular</p> <p>EcoBlue</p> <p>EC.1105 EC.1151 Monocular Achromatic LED WF 10x/18mm 40x, 100x, 400x, 1000x</p>	 <p>Oxion Inverso Life Science</p> <p>OX.2053-PLPH Trinocular Phase Contrast Inverted model 100x, 200x, 400x</p>	 <p>EduBlue Digital</p> <p>ED.1805-S Binocular Digital Head 10x, 20x, 40x Rack & Pinion Stand Diascopic LED</p>	 <p>Simple Stereo</p> <p>P-10 LED (60.110) Binocular 1x/3x Objectives Compact Rack & Pinion Stand 10x, 30x</p>

STEREO MICROSCOPE

 <p>StereoBlue</p> <p>SB.1902 SB.1903-P Binocular Trinocular Stereo Zoom 7x-45x LED</p>	 <p>StereoBlue</p> <p>SB.1903-U Trinocular Stereo Zoom 7x-45x Universal Arm Stand</p>	 <p>NexusZoom Stereo Zoom</p> <p>NZ.1902-S NZ.1903-S Binocular Trinocular HWF 10x/22mm Double 3W LED Total 6.7x-45x</p>	 <p>NexusZoom</p> <p>NZ.1703-PL NZ.1703-GEML Trinocular 6.5x-55x Standard HWF 10x eyepieces</p>
--	--	---	--

MATERIAL SCIENCE & POLARIZE

 <p>StereoBlue</p> <p>Metallurgy / Material Science</p> <p>OX.2153-PLM Trinocular 50x, 100x, 200x, 500x, 1000x Brightfield with polarization</p>	 <p>iScope</p> <p>IS.1053-PLMi Trinocular EWF 10x/20mm Plan PLMi Abbe Condenser 50x, 100x, 200x, 500x</p>	 <p>Polarization</p> <p>IS.1052-PLPOLi Binocular 40x, 100x, 200x, 400x Rotatable Round Stage</p>	 <p>Polarization Upper Lighting</p> <p>IS.1053-PLPOLRI Trinocular 40x, 100x, 200x, 400x Rotatable Round Stage Epi-Illumination</p>
--	--	--	---

MATERIAL SCIENCE & POLARIZE

 <p>Special</p> <p>Delphi-X</p> <p>Metallurgical Material Science</p> <p>DX.2053-PLMi Brightfield and Darkfield illumination EIS Optical System 50x, 100x, 200x, 500x</p>	 <p>Special</p> <p>Delphi-X</p> <p>DX.3153-APLi EIS Optical System Fluorescence 40x, 100x, 200x, 400x, 1000x</p>	 <p>Special</p> <p>Delphi-X</p> <p>DX.2053-PLMRI Plan Apochromatic Enhanced Infinity System 50x, 100x, 200, 500x, 1000x (optional)</p>	 <p>Special</p> <p>Delphi-X</p> <p>DX.3153-PLPHi EIS Optical System 100x, 200x, 400x, 1000x Super Wide Field (SWF) eyepiece 25mm</p>
--	--	---	--

CAMERA & LIGHTING



VC.3036 | Adaptor DC.1326
1080P | HDMI | USB2.0 | SD Card
6MP CMOS | C-mount interface



DC.5000C
5MP | USB2.0 | 24 bits Color Rendering
Low Signal/Noise Ration



LE.1973 (Ring Light)
High Power 144 LEDs | 4 segment illumination
Color 6500K | Remote Control



LE.5208
Cold Light Source, Compact Dual 2W
Color 6500K | 2 x 1W LED | 2 Flexible Arms

MAGNIFIER SCOPE & ACCESORIES



PB.5010
Measuring Microscope 40x



PB.5014
Measuring Microscope 100x LED
WF10 X 0.01 mm/17 mm



PB.5044
Measuring magnifier 7x | Eyepiece \varnothing 18 mm
Field of view 24 mm



PB.5046
Cold Light Source, Compact Dual 2W
Measuring magnifier 10x



PB.5039
Achromatic | FOV 15mm
Measuring magnifier 15x



MT.5503
Table Clamp | Razor Blade Holder
Wooden Cabinet | Stainless Steel



AE.1110
Object Micrometer 1/100
Min. Pitch 0,01 mm



EDUPAD | EP.5000 WIFI
8" display | 5MP | 1280 x 720
24 Bits | CMOS 1/2.5" | Gambar & Video

OPTIONAL LENS



BB.6020 (for BioBlue)
Wide field eyepiece WF20x/11 mm



IS.6220 (for iScope)
WF20x/12 mm eyepiece
 \varnothing 23.2 mm tube



OX.6015
Wide field eyepiece HWF 15x/16 mm
for Oxion Inverso inverted microscopes



AE.5120
Camera Adaptor for Oxion Inverso
23.2 mm Tube



OX.9850
Camera Adaptor with 0.5x lens for Oxion
Oxion Inverso microscope



DC.1326
Camera Adaptor | C-Mount 0.35x



DC.1320 | DC.1321
C-mount 1x adapter without objective
for standard \varnothing 23.2 mm tubes


DIGITAL CAMERA FOR MICROSCOPY

KOPTICS
IMAGING SYSTEMS



KTS-AF-HDMI
Sensor Sony IMX | 1920x1080 | HDMI
USB | Auto Focus ROI On or Off

KOPTICS
IMAGING SYSTEMS



KTS-DV-HDMI
Sensor CMOS | 1920x1080 | IR Sensor
Measure | HDMI

KOPTICS
IMAGING SYSTEMS



KTS-VGA-CIS
960 x 540 | Measure | C-Mount | USB + Mouse
Gambar & Video | Zoom Digital 1x-10x

KOPTICS
IMAGING SYSTEMS



KTS-VGA-CAM
1920 x 1080 | C-Mount | USB + Mouse
Gambar & Video | Zoom Digital 1x-10x

MAGNIFYING LAMPS

OOTSUKA




SKK-B | SKKL-B
Magnifier Lens : 2x, 4x, 6x, 8x, 10x

OOTSUKA



SKK-F | SKKL-F
Magnifier Lens : 2x, 4x, 10x

OOTSUKA



Barlight (Light for Inspection)
White LED 7 pcs | 8W
IP40 (indoor use only)

OOTSUKA



ENVL-B | ENVL-F
LED Illuminated Magnifier
2x, 4x, 10x

OOTSUKA



ENVL-FL
F-Type | Free Arm Illuminated Magnifier
2x, 4x | 10W | Arm Length 1000mm

OOTSUKA



ENVL-CL
Epi-illumination around the lens | 2x, 4x
Turn on/off or/dim the lighting

OOTSUKA



O-LIGHTIII-LED
Fluorescent tube lighting magnifier
2x, 3.5x | 9W | Recta-System Lens

OOTSUKA



BORELOUPE F | magnification of 2x/3x
LED illuminated loupe for checking holes,
grooves, and inside walls


BOREScope | ENDOSCOPE

COANTEC




M3-6015 | M3-2810
Probe Diameter : 2.8mm, 6mm | LED
Articulation 360° all-way

COANTEC



E5-PRO 6015
Optic Fiber Light Guiding
Probe Diameter : 6mm | DOF : 10-100mm

MISUMI
Inspection & Control



Digital CMOS Endoscope
720P | LED Light | USB2.0
White LED x 6 pcs | Rolling Shutter

Vision
SOLUTIONS



Camβ | Handheld Digital Magnifier
Mag. up to 20x | 1280 x 720
Store up 20K images | 4.3" colour display


MIRUC

MIRUC




Measure Scope
Microscopes essential to all industrial
manufacturing, inspection

MIRUC



Dovetail Stage
Sliding unit that can be used in a variety of
position settings

MIRUC



Slide Operation Dovetail Stage
Slide operation dovetail stage is a highly
accurate dovetail stage

MIRUC



Air Pit
Advanced vacuum pickup instrument that is
widely used in many industries

VISION

Vision
MEASUREMENT



Swift PRO Duo

a versatile and exceptionally intuitive manual optical & video measuring system

Vision
MEASUREMENT



TVM35

Accurate 2D measurement within the field of view (FOV)

3D Measurement



Express Measurement



Vision
MEASUREMENT



Mantis Elite

Ergonomic eyepieceless stereo microscope magnification options up to 20x

Vision
MEASUREMENT



Evo Cam II

Full-HD Digital Microscope 1080p/60fps | Mag. up to 300x

Visual Inspection Full HD



STARRET

Starrett



VB400

Vertical Bench Top Optical Comparator

Starrett



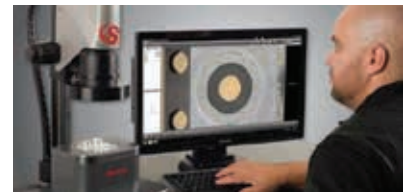
KineMic KMR-FOV-M3

Video microscope incl. video camera, fixed magnification telecentric lens

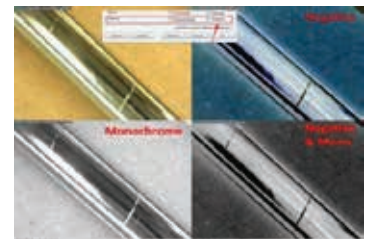
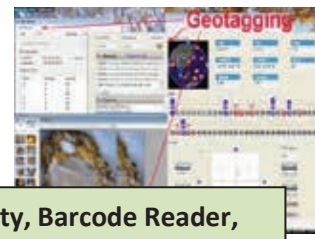
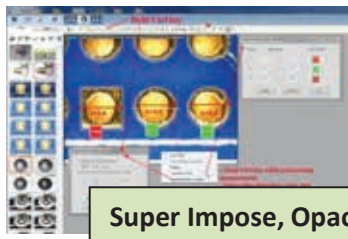
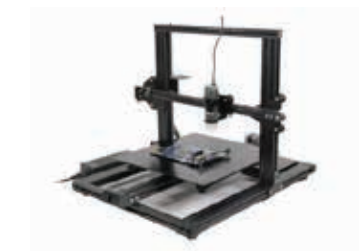
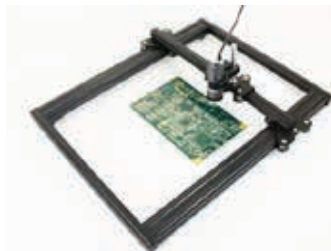
3D Measurement



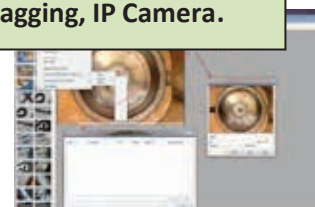
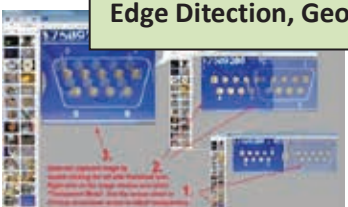
Express Measurement



Spesial Features & Combination Machine



Super Impose, Opacity, Barcode Reader, Edge Ditection, Geotagging, IP Camera.



Valid 2020





Our Branch

Jakarta (HQ)

Complex Pertokoan Glodok Plaza
Blok F No. 115, Jakarta 11180
Indonesia
Tel. +6221 649 7777, 626 3851 / 52

Cikarang

Kawasan Industri Jababeka
Jl. Jababeka VII G Blok R no. 1E
Lemah Abang, Bekasi 17530
Indonesia
Tel. +6221 893 5235 / 36 / 37

Semarang

Complex Ruko Majapahit
J. Majapahit 339 Kav. D
Semarang 50137
Indonesia
Tel. +6224 670 3991 / 92 / 93

Jakarta

Complex Pertokoan Glodok Jaya
No. 74 Jakarta 11180
Indonesia
Tel. +6221 649 8749 / 57 / 58

Bandung

Complex Istana Mekar Wangi
Jl. Mekar Wangi Utama No. 58
Mohamad Toha, Bandung 40235
Indonesia
Tel. +6222 852 41035 / 36 / 37

Surabaya

Complex Pertokoan Aneka Graha Asri
Jl. Ngagel No. 179 - 183 Kav. 19
Surabaya 60246
Indonesia
Tel. +6231 501 4933 / 4820 / 9167

Our Showroom

Lindeteves Trade Center
Glodok GF 1 Blok C 32 No 3
Jakarta 11180

Tel. +6221 6220 2391/ 92 / 93

visit us for checking our products and news at microscope.id