



Vol. 01-2020



# VISUAL

## Technology

for SCIENCE



visit us for checking our product and news at [www.microscope.id](http://www.microscope.id)



Microscope.id berawal tahun 2017 dan telah sukses dipercaya oleh ratusan pelanggan kami secara nasional meliputi profesional science, industri dan pemerintahan.



**Visi**

Mewujudkan solusi terbaik dengan mikroskop dengan analisa visual dan measuring system.

**Misi**

Memberikan solusi dan konsultasi terbaik untuk pelanggan kami.

**Nilai :**

- **Pengetahuan ( Knowledge )**
- **Solusi ( Solution )**
- **Kepuasan pelanggan ( Customer Satisfaction )**

Layanan visual kami meliputi layanan analisa masalah dan pengembangan produk serta pengukuran dengan teknik visual (gambar) menggunakan produk mikroskop dan visual measuring system.

Solusi kami berikan adalah konsultasi melalui product demo, email, telephone dan live chat.

---

# Dino-Lite

Mikroskop digital Dino-Lite adalah perangkat mikroskop portabel yang luar biasa dan mudah digunakan untuk inspeksi, pengujian, dan dokumentasi. Saat gambar ditampilkan pada monitor HP ataupun PC, pengguna dapat memeriksa dan menganalisis gambar bahkan melakukan pengukuran dimensi objek yang dilihat.

Berbagai fitur pada software Dino-Lite merupakan hasil perkembangan yang luar biasa seperti transparant mode, edge tracking, snap mode measurement dan comparison.

## All Models Include

1 YEAR WARRANTY • FREE TECH SUPPORT

---

## At the Booth



AF4915ZT + WF20  
USB & Wireless

AM73915MZT  
High Resolution &  
Great Frame Rate

AF4915ZT  
USB & Wireless Ready

RK10  
Designed for  
Precision

RK-06  
Designed for  
Versatility

---

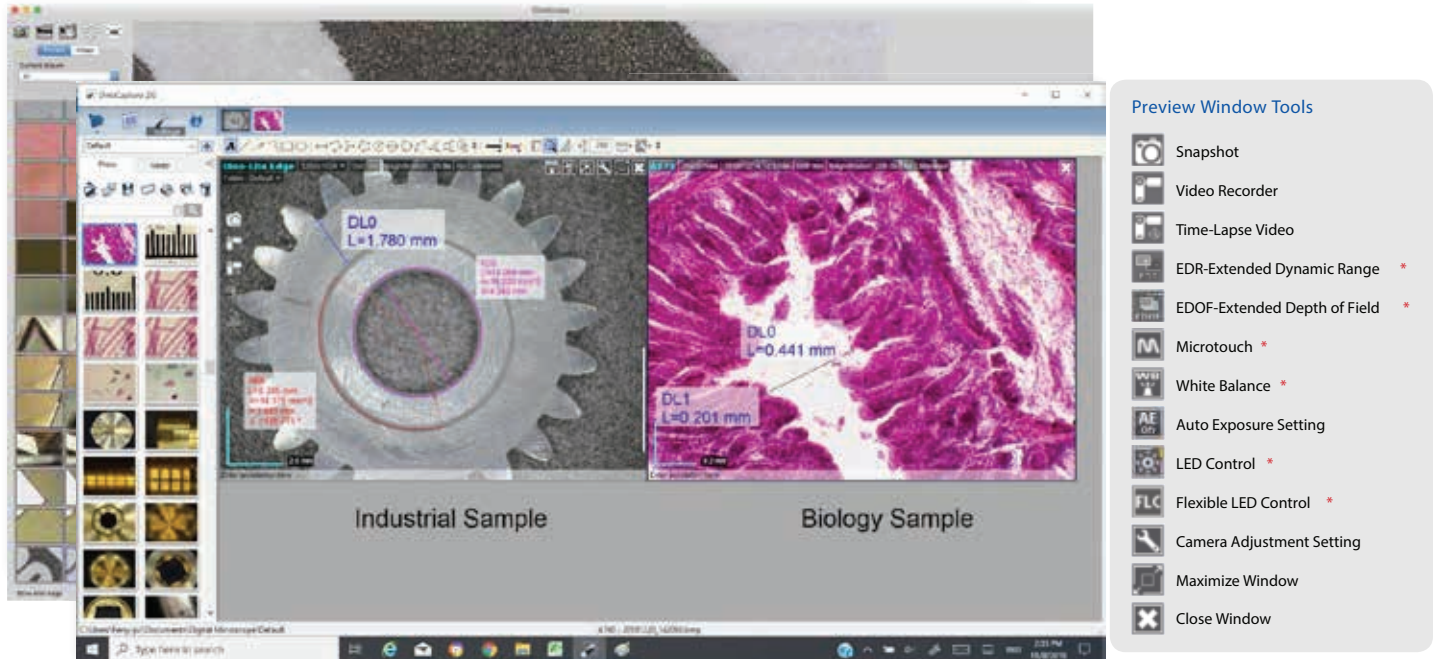
## Visit us online at [microscope.id](http://microscope.id)

- Product Demos
- Training Videos
- Tech Support
- Products Information
- Software Updates
- Specification Information
- ... and more !

# Key Features

## Capture Images & Video

Easily save images, videos, and time-lapse videos using the included license-free software.



\* Feature can only be found on specific Dino-Lite models.

## Adjust Image Settings

Use the software settings panel to adjust lighting, colors, brightness, contrast, and other settings.

## Connectivity Types

Available connection types include USB 2.0, USB 3.0, TV(RCA), VGA, and HDMI.

## Magnification Ranges

Our standard magnification range is 10x-220x. Select models go up to 900x.

## Housing Types

Our ABS and medical-grade plastic bodies are very reliable and strong. For enhanced protection, the metal body consists of aerospace grade machine tooled aluminum.

## Lighting Control

Sometimes light can be a damaging factor. Many Dino-Lite models have a built-in adjustable polarizer for reducing glare. Diffuser caps, lighting accessories, and exposure adjustments also help to achieve optimal results.

## Measurement & Annotation

Most models have measurement capability for lines, circles, angles, and more. Snap measurements to any edge for ease of use. You can also add annotations for easy file organization.

## Special Lighting - IR/UV/Fluorescence

Models are available with fluorescence, UV, and IR. A small sample is listed here. Contact us for more information.

Series	Excitation Wavelength	Emission Filter	Series	Excitation Wavelength	Emission Filter
FUW (UV)	375nm	N/A	YFGW	525nm	570nm
GFBW	480nm	510nm	DFRW	620nm	650nm
GRFBY	480/575	510/610	FJT (IR)	940nm	N/A





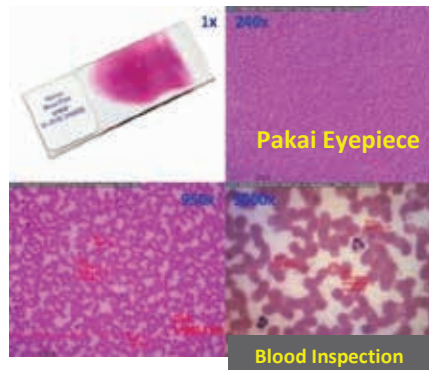
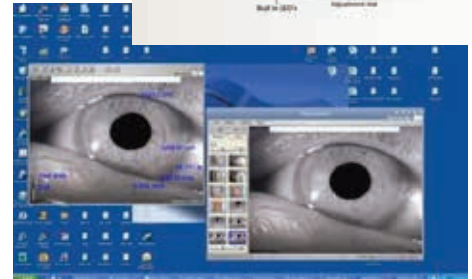
**Aplikasi :**

- *Analyze Dermatology*
- *Inspection*
- *Medical*
- *Ophthalmology / Iridology*
- *Pathology*
- *Ear, Nose & Throat*

Para profesional medis di semua spesialisasi menggunakan berbagai kamera mikroskop Dino-Lite untuk memeriksa pasien dan mendokumentasikan apapun yang ingin dilihat.

Ada alat khusus untuk membantu Kedokteran Gigi, Oftalmologi, dan Otoskopi membantu memberikan gambar dan dokumentasi yang sangat baik dibandingkan peralatan medis tradisional.

Dino-Lite USB dapat digunakan dengan perangkat lunak DinoCapture gratis, atau dengan sebagian besar perangkat lunak Electronic Medical Records (EMR) Custom software.



**High Series 230X**



**AM4515T8**  
700x~900x | 1.3MP | USB2.0  
AMR | Plastic Housing | Measuring  
Gambar & Video | Magnification Locked



**RK10VXEXFXPX**  
Professional Stand  
22 cm (L) x 15 cm (W) x 23 cm (H)



**S2-M2**  
Petri Dish Holder | Dimension  
27.5 cm (L) x 15 cm (W) x 4 cm (H)

**Mid Series 200X**



**AM4915ZT**  
20~220X | 200X | 1.3MP | USB2.0/WIFI  
ESD Safe | Plastic Housing | EDof | EDR  
Measurement | Gambar & Video | Polarizer



**HDE-01**  
Adjustable Holder |  
180G include rest plat

**Basic Series 200X**



**AF3113T**  
20x~50x, 200x | VGA (640x480)  
USB2.0/WIFI | Color CMOS | Plastic Housing  
Measurement | Gambar & Video



**RK-05**  
Moveable X 30 Degree |  
14cm (L) x 11cm (W) x  
16.5cm (H)



**WF-20**  
Wi-Fi Streamer | 20M range  
Windows, Android, iOS | 180 minutes

**Eyepiece Series**

untuk Bino / Trinocular



**Euromex Calibration Scale**  
AE-110CALIB 1mm/100 (AE-1110)



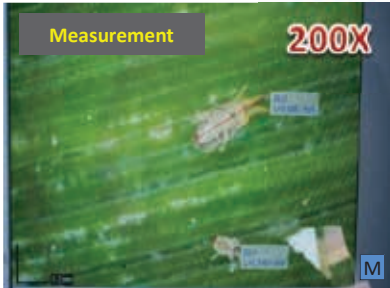
**Dino-Eye AM7025X**  
5MP | USB2.0  
Measuring | Gambar & Video  
23mm, 30mm, 30.5mm diameter adaptor





Setiap perusahaan produksi pertanian, hortikultura atau florikultura bertujuan untuk meningkatkan pertumbuhan tanaman dan bertujuan untuk membuat proses pertumbuhan se-efisien mungkin.

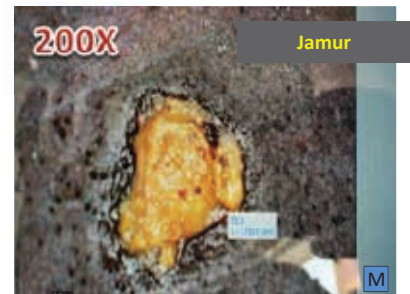
Salah satu tantangannya adalah menghindari hama untuk merusak pertumbuhan tanaman dan menghancurkan tanaman. Kutu hama dapat menyebabkan jatuhnya daun prematur, kerusakan tunas dan kematian seluruh tanaman, dengan dampak kerusakan ekonomi yang besar. Mikroskop portabel Dino-Lite sebagai portable mikroskop satu satunya yang mempunyai solusi mudah untuk di bawa-bawa dan dapat terhubung dengan handphone untuk melakukan penyimpanan gambar dan pengukuran



**Aplikasi :**

- Pencegahan Hama
- Pelestarian dan perlindungan tanaman
- Analisa pertumbuhan
- Perbandingan jenis
- Data dan pengukuran dimensi
- Pembelajaran dan riset

**Extra Deep Of Field**  
(Fokus segala bidang)



**High Series 950X**



**AM7515MT8A**  
700~950X | 5MP | USB2.0 | FLC  
Measuring | Gambar & Video  
Brightfield / Darkfield | AMR



**RK10VXEXFPX**  
Professional Stand  
22 cm (L) x 15 cm (W) x 23 cm (H)



**MS15X-S1**  
Inspection Stage | 5 cm diameter  
10 cm long x 8 cm wide | Vernier Scale

**Mid Series 200X**



**AM4915ZT**  
20~220X | 200X | 1.3MP | USB2.0/WiFi  
ESD Safe | Plastic Housing | EDOF | EDR  
Measurement | Gambar & Video | Polarizer



**RK-06E**  
Professional Stand  
22 cm (L) x 15 cm (W) x 27 cm (H)



**WF-20**  
Wi-Fi Streamer | 20M range  
Windows, Android, iOS | 180 minutes

**Basic Series 200X**



**AF3113T**  
20x~50x, 200x | VGA (640x480)  
USB2.0/WiFi | Color CMOS | Plastic Housing  
Measurement | Gambar & Video



**RK-05**  
Moveable X 30 Degree |  
14cm (L) x 11cm (W) x 16.5cm (H)



**WF-20**  
Wi-Fi Streamer | 20M range  
Windows, Android, iOS | 180 minutes

**Eyepiece Series**  
untuk Trinocular



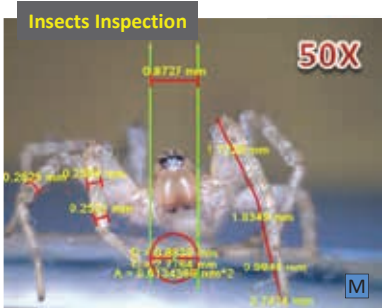
**Euromex Calibration Scale**  
AE-110CALIB 1mm/100 (AE-1110)



**Dino-Eye AM7025X**  
5MP | USB2.0  
Measuring | Gambar & Video  
23mm, 30mm, 30.5mm diameter adaptor



Dino-Lite sebagai alat berharga untuk para peneliti, mahasiswa, atau kolektor, kamera mikroskop Dino-Lite dapat meneliti serangga baik yang mengguntungkan / merugikan untuk dapat dipelajari lebih mendalam dan mudah dengan data.



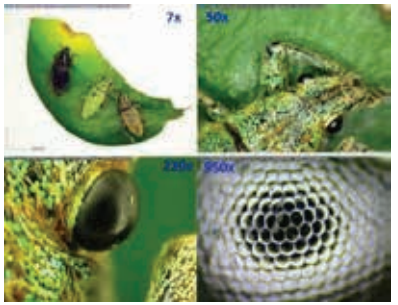
Pembesaran yang dihasilkan Dino-Lite adalah real sesuai dengan hasil optic yang ditampilkan ke layar digital. Brand terpercaya Nasional dan Internasional.



Mikroskop portabel Dino-Lite sebagai portable mikroskop satu satunya yang mempunyai cahaya Fluoresence. Mudah untuk di bawa-bawa dan dapat terhubung dengan handphone untuk melakukan penyimpanan gambar dan pengukuran



- Aplikasi :**
- Pencegahan Hama
  - Pelestarian dan perlindungan serangga
  - Analisa pertumbuhan dan kembangbiak
  - Perbandingan jenis
  - Data dan pengukuran dimensi
  - Pembelajaran dan riset



**High Series 450X**

**AM7515MT4A**  
4150~470X | 5MP | USB2.0 | FLC  
Measuring | Gambar & Video  
Brightfield / Darkfield | AMR

**RK10VXEXFPX**  
Professional Stand  
22 cm (L) x 15 cm (W) x 23 cm (H)

**MS15X-S2**  
Inspection Stage | 5 cm diameter  
10 cm long x 8 cm wide | Vernier Scale

**Mid Series 200X**

**AM4915ZT**  
20~220X | 200X | 1.3MP | USB2.0/WIFI  
ESD Safe | Plastic Housing | EDOF | EDR  
Measurement | Gambar & Video | Polarizer

**RK06E**  
Professional Stand  
22 cm (L) x 15 cm (W) x 27 cm (H)

**WF20**  
Wi-Fi Streamer | 20M range  
Windows, Android, iOS | 180 minutes

**Basic Series 200X**

**AF3113T**  
20x~50x, 200x | VGA (640x480)  
USB2.0/WIFI | Color CMOS | Plastic Housing  
Measurement | Gambar & Video

**RK05**  
Moveable X 30 Degree |  
14cm (L) x 11cm (W) x 16.5cm (H)

**WF20**  
Wi-Fi Streamer | 20M range  
Windows, Android, iOS | 180 minutes

**Eyepiece Series**  
untuk Trinocular

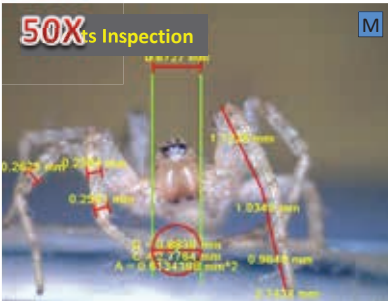
**Euromex Calibration Scale**  
AE-110CALIB 1mm/100 (AE-1110)

**Dino-Eye AM7025X**  
5MP | USB2.0  
Measuring | Gambar & Video  
23mm, 30mm, 30.5mm diameter adaptor

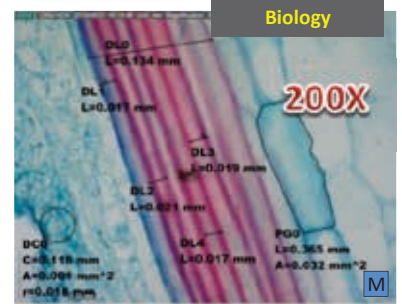




Kamera mikroskop Dino-Lite digunakan untuk menampilkan objek-objek yang kecil pada layar monitor. Ini dapat digunakan dalam ruang kelas sebagai alat pengajaran kelompok yang bermanfaat. Dengan Dino-Lite Basic ke PC dan Anda mendapatkan hasil instan di layar. Murid dapat mempelajari serangga, elektronik, kerajinan dan banyak lagi. Dino-Lite Basic memiliki kinerja harga yang membuatnya cocok untuk digunakan oleh siswa secara individu di kelas.



- Aplikasi :**
- *Breeding Spores Research*
  - *Zebra Fish Research*
  - *Nanoparticle Research*
  - *Stem Cell Research*
  - *Fluorescence Guide Surgery*
  - *Pest Control*
  - *Etc ...*



**High Series 450X**

**AM7515MT4A**  
4150~470X | 5MP | USB2.0 | FLC  
Measuring | Gambar & Video  
Brightfield / Darkfield | AMR

**RK10VXEXFPX**  
Professional Stand  
22 cm (L) x 15 cm (W) x 23 cm (H)

**MS15X-S2**  
Inspection Stage | 5 cm diameter  
10 cm long x 8 cm wide | Vernier Scale

**Mid Series 200X**

**AM4915ZT**  
20~220X | 200X | 1.3MP | USB2.0/WiFi  
ESD Safe | Plastic Housing | EDOF | EDR  
Measurement | Gambar & Video | Polarizer

**RK06E**  
Professional Stand  
22 cm (L) x 15 cm (W) x 27 cm (H)

**WF20**  
Wi-Fi Streamer | 20M range  
Windows, Android, iOS | 180 minutes

**Basic Series 200X**

**AF3113T**  
20x~50x, 200x | VGA (640x480)  
USB2.0/WiFi | Color CMOS | Plastic Housing  
Measurement | Gambar & Video

**RK-05**  
Moveable X 30 Degree |  
14cm (L) x 11cm (W) x 16.5cm (H)

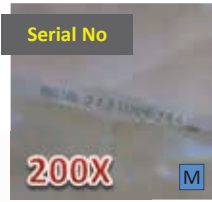
**WF-20**  
Wi-Fi Streamer | 20M range  
Windows, Android, iOS | 180 minutes

**Eyepiece Series**  
untuk Bino/ Trinocular

**IS.1153Pli**

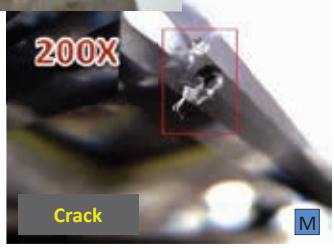
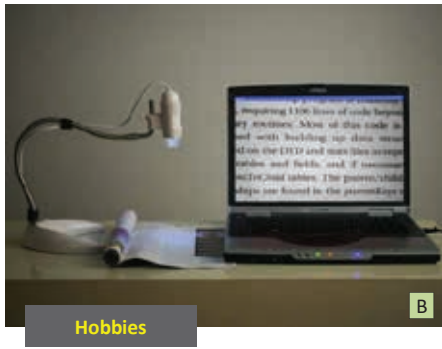
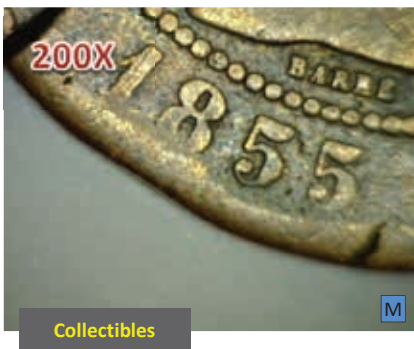
**IS.1152Pli**

**Dino-Eye AM7025X**  
5MP | USB2.0  
Measuring | Gambar & Video  
23mm, 30mm, 30.5mm diameter adaptor



- Aplikasi :**
- Jewelry
  - Coin, Stamps
  - Antiques
  - Hobbies
  - Watchmaking
  - Museum
  - Geology

Mikroskop Dino-Lite adalah alat bantu visual untuk berbagai macam perhiasan, koin, dan koleksi museum. Karena memiliki kemampuan untuk memeriksa berbagai macam batu, perhiasan, barang antik, lukisan berbagai benda purba dan moderen dengan lebih detail dilengkapi data foto dan hasil dimensi. Sudah banyak museum dan perusahaan tambang mempercayakan Dino-Lite untuk membuat data dan menyimpan untuk mencegah terjadinya manipulasi hasil dan duplikasi kejahatan. Dengan bantuan pembesaran kita dapat membandingkan setiap detail dari keaslian suatu benda.



**High Series 900X**

**AM7515MT8A**  
700~990X | 5MP | USB2.0 | FLC  
Measuring | Gambar & Video  
Brightfield / Darkfield | AMR

**RK10VXEXFPX**  
Professional Stand  
22 cm (L) x 15 cm (W) x 23 cm (H)

**MS15X-S1**  
Inspection Stage | 5 cm diameter  
10 cm long x 8 cm wide | Vernier Scale

**Mid Series 200X**

**AM4915ZT**  
20~220X | 200X | 1.3MP | USB2.0/WiFi  
ESD Safe | Plastic Housing | EDOF | EDR  
Measurement | Gambar & Video | Polarizer

**RK06E**  
Professional Stand  
22 cm (L) x 15 cm (W) x 27 cm (H)

**MS33A & MS16J**  
Ergonomic Stand | Ring Holder mount

**Eyepiece Series**  
untuk Bino/Trinocular

**NZ.1903S**

**Dino-Eye AM7025X**  
5MP | USB2.0  
Measuring | Gambar & Video  
23mm, 30mm, 30.5mm diameter adaptor

**Basic Series 200X**

**AF3113T**  
20x~50x, 200x | VGA (640x480)  
USB2.0/WiFi | Color CMOS | Plastic Housing  
Measurement | Gambar & Video

**RK05**  
Moveable X30 Degree |  
14cm (L) x 11cm (W) x 16.5cm (H)

**WF20**  
Wi-Fi Streamer | 20M range  
Windows, Android, iOS | 180 minutes



# FORENSIC & CRIMINOLOGY

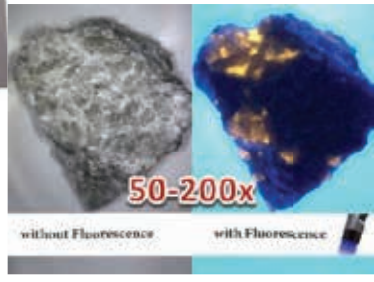
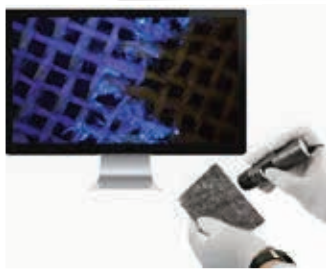
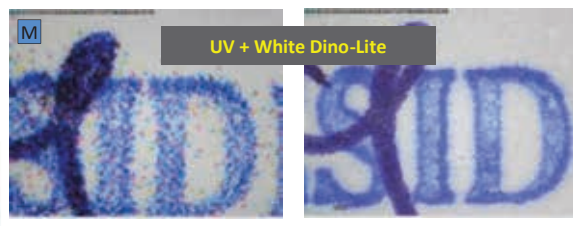
Fitur perbesaran mikroskop Dino-Lite dengan UltraViolet dan Inframerah dapat membantu mendeteksi dokumen palsu, uang palsu, produk, dan barang-barang lainnya.

Produk palsu secara visual mirip dilihat oleh mata tetapi menipu pembeli sehingga tidak memberikan kualitas yang sama dengan asli dan dapat menimbulkan masalah keamanan.

Menggunakan Dino-Lite dapat membantu verifikasi keaslian komponen dengan memeriksa: inkonsistensi, kode tanggal tidak cocok, resurfacing, dan tanda-tanda asli lainnya. Kualitas Dino-Lite dirancang dengan spesial menghasilkan detail dengan sempurna dan mudah digunakan.



- Aplikasi :**
- Fake Money Detection
  - Recognize Fake Medicine
  - Recognize Fingerprint
  - Counterfit Detection
  - Handwriting Detection
  - Etc ...



## High Series 900X

**AM7515MT8A**  
700~990X | 5MP | USB2.0 | FLC  
Measurement | Gambar & Video  
Brightfield / Darkfield | AMR

**RK10VXEXFPX**  
Professional Stand  
22 cm (L) x 15 cm (W) x 23 cm (H)

**MS15X-S2**  
Inspection Stage | 5 cm diameter  
10 cm long x 8 cm wide | Vernier Scale

## Mid Series 200X

**AM4915ZT**  
20~220X | 200X | 1.3MP | USB2.0/WiFi  
ESD Safe | Plastic Housing | EDof | EDR  
Measurement | Gambar & Video | Polarizer

**RK10VXEXFPX**  
Professional Stand  
22 cm (L) x 15 cm (W) x 23 cm (H)

**WF20**  
Wi-Fi Streamer | 20M range  
Windows, Android, iOS | 180 minutes

**AM4115T-FVT (UV)**  
20~220X | 200X | 1.3MP | USB2.0  
Measurement | Gambar & Video | Polarizer

**RK05**  
Moveable X 30 Degree |  
14cm (L) x 11cm (W) x  
16.5cm (H)

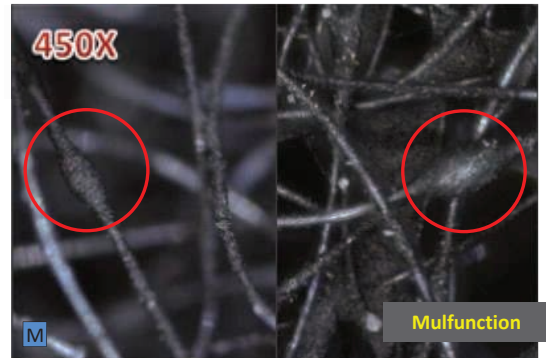
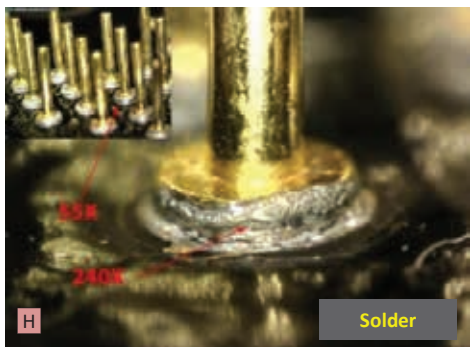
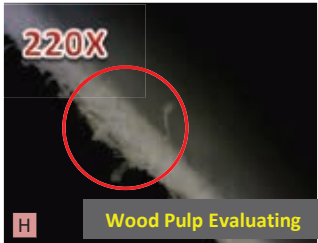
**MS15X-S2**  
Inspection Stage | 5 cm diameter  
10 cm long x 8 cm wide | Vernier Scale

## Special Lighting

**AM4115T-FVW (UV + White)**  
UV LED | 1.3MP  
20X~50X, 200X | USB2.0 | Measurement

**AM4815-FJT (Infrared)**  
20~220X | 1.3MP | USB2.0  
8 Infrared (940nm) Led | Measurement

**RK06E**  
Professional Stand  
22 cm (L) x 15 cm (W) x 27  
cm (H)



- Aplikasi :**
- Pest Control
  - Wood Working
  - Watch Repair
  - Medical
  - Skin Inspection
  - Etc ...

Mikroskop Dino-Lite memberikan kemudahan para pengguna profesional pada fungsi pengukuran dengan gambar yang berkualitas tinggi.

Untuk item yang mungkin memiliki permukaan reflektif, kami merekomendasikan unit dengan pencahayaan terpolarisasi. Fitur polarisasi digunakan untuk mengurangi silau dan membantu menghilangkan 'titik panas' dari permukaan reflektif. Ini membantu memberikan pencahayaan seragam untuk membawa detail permukaan lebih banyak dengan silau minimal.

**High Series 950X**

**AM7515MT8A**  
700~990X | 5MP | USB2.0 | FLC  
Measurement | Gambar & Video  
Brightfield / Darkfield | AMR

**RK-10VXEXFPX**  
Professional Stand  
22 cm (L) x 15 cm (W) x 23 cm (H)

**MS15X-S2**  
Inspection Stage | 5 cm diameter  
10 cm long x 8 cm wide | Vernier Scale

**Mid Series 200X**

**AM4915ZT**  
20~220X | 200X | 1.3MP | USB2.0/WiFi  
ESD Safe | Plastic Housing | EDOF | EDR  
Measurement | Gambar & Video | Polarizer

**RK-05**  
Moveable X 30° Degree |  
14cm (L) x 11cm (W) x  
16.5cm (H)

**WF-20**  
Wi-Fi Streamer | 20 m range  
Windows,Android,iOS | 180 minute

**Basic Series 200X**

**AF3113T**  
20x~50x, 200x | VGA (640x480)  
USB2.0/WiFi | Color CMOS | Plastic Housing  
Measurement | Gambar & Video

**RK-06E**  
Professional Stand  
22 cm (L) x 15 cm (W) x 27  
cm (H)

**BLZW1**  
Light Inspection Stage | Polarizer  
USB & DC adapter | 10 x 9 x 2cm

**Eyepiece Series**  
untuk Bino / Trinocular

Life Science  
Phase  
contrast

**AE-110CALIB**

Metallurgy

Polarization

**Euromex VC3036**  
5MP | USB2.0 & HDMI  
Measuring | Gambar & Video

LIFE SCIENCE



**EcoBlue**

**EC.1152 | EC.1153**  
Binocular | Trinocular | Achromatic  
NeoLED | Total 40x, 100x, 400x, 1000x



**BioBlue**

**BB.1152-PLi | BB.1153-PLi**  
Binocular | Trinocular | NeoLED  
40x, 100x, 400x, 1000x



**iScope**

**IS.1152 | IS.1153-PLi**  
Binocular | Trinocular | Brightfield Contr  
NeoLED | 40x, 100x, 400x, 1000x



**BioBlue  
Phase Contrast**

**BB.1153-PLPH**  
Trinocular | Rackless | Mechanical Stage  
NeoLED | 100x, 200x, 400x, 1000x



**Digital  
Monocular**

**EcoBlue**

**EC.1105 | EC.1151**  
Monocular | Achromatic | LED  
WF 10x/18mm | 40x, 100x, 400x, 1000x



**Oxion Inverso  
Life Science**

**OX.2053-PLPH**  
Trinocular | Phase Contrast | Inverted model  
100x, 200x, 400x



**EduBlue  
Digital**

**ED.1805-S**  
Binocular | Digital Head | 10x, 20x, 40x  
Rack & Pinion Stand | Diascopic | LED



**Simple Stereo**

**P-10 LED (60.110)**  
Binocular | 1x/3x Objectives | Compact  
Rack & Pinion Stand | 10x, 30x

STEREO MICROSCOPE



**StereoBlue**

**SB.1902 | SB.1903-P**  
Binocular | Trinocular | Stereo Zoom  
7x-45x | LED



**StereoBlue**

**SB.1903-U**  
Trinocular | Stereo Zoom | 7x-45x  
Universal Arm Stand



**NexusZoom  
Stereo Zoom**

**NZ.1902-S | NZ.1903-S**  
Binocular | Trinocular | HWF 10x/22mm  
Double 3W LED | Total 6.7x-45x



**NexusZoom**

**NZ.1703-PL | NZ.1703-GEML**  
Trinocular | 6.5x-55x  
Standard HWF 10x eyepieces

MATERIAL SCIENCE & POLARIZE



**StereoBlue**

**Metallurgy /  
Material Science**

**OX.2153-PLM**  
Trinocular | 50x, 100x, 200x, 500x, 1000x  
Brightfield with polarization



**iScope**

**IS.1053-PLMi**  
Trinocular | EWF 10x/20mm | Plan PLMi  
Abbe Condenser | 50x, 100x, 200x, 500x



**Polarization**

**IS.1052-PLPOLi**  
Binocular | 40x, 100x, 200x, 400x  
Rotatable Round Stage



**Polarization  
Upper Lighting**

**IS.1053-PLPOLRI**  
Trinocular | 40x, 100x, 200x, 400x  
Rotatable Round Stage | Epi-Illumination

MATERIAL SCIENCE & POLARIZE



**Special**

**Delphi-X**

**Metallurgical  
Material Science**

**DX.2053-PLMi**  
Brightfield and Darkfield illumination  
EIS Optical System | 50x, 100x, 200x, 500x



**Special**

**Delphi-X**

**DX.3153-APLi**  
EIS Optical System | Fluorescence  
40x, 100x, 200x, 400x, 1000x



**Special**

**Delphi-X**

**DX.2053-PLMRI**  
Plan Apochromatic | Enhanced Infinity System  
50x, 100x, 200, 500x, 1000x (optional)



**Special**

**Delphi-X**

**DX.3153-PLPHi**  
EIS Optical System | 100x, 200x, 400x, 1000x  
Super Wide Field (SWF) eyepiece 25mm

CAMERA & LIGHTING



**VC.3036 | Adaptor DC.1326**  
1080P | HDMI | USB2.0 | SD Card  
6MP CMOS | C-mount interface



**DC.5000C**  
5MP | USB2.0 | 24 bits Color Rendering  
Low Signal/Noise Ration



**LE.1973 (Ring Light)**  
High Power 144 LEDs | 4 segment illumination  
Color 6500K | Remote Control



**LE.5208**  
Cold Light Source, Compact Dual 2W  
Color 6500K | 2 x 1W LED | 2 Flexible Arms

MAGNIFIER SCOPE & ACCESORIES



**PB.5010**  
Measuring Microscope 40x



**PB.5014**  
Measuring Microscope 100x LED  
WF10 X 0.01 mm/17 mm



**PB.5044**  
Measuring magnifier 7x | Eyepiece  $\varnothing$ 18 mm  
Field of view 24 mm



**PB.5046**  
Cold Light Source, Compact Dual 2W  
Measuring magnifier 10x



**PB.5039**  
Achromatic | FOV 15mm  
Measuring magnifier 15x



**MT.5503**  
Table Clamp | Razor Blade Holder  
Wooden Cabinet | Stainless Steel



**AE.1110**  
Object Micrometer 1/100  
Min. Pitch, 0,01 mm



**EDUPAD | EP.5000 WIFI**  
8" display | 5MP | 1280 x 720  
24 Bits | CMOS 1/2.5" | Gambar & Video

OPTIONAL LENS



**BB.6020 (for BioBlue)**  
Wide field eyepiece WF20x/11 mm



**IS.6220 (for iScope)**  
WF20x/12 mm eyepiece  
 $\varnothing$  23.2 mm tube



**OX.6015**  
Wide field eyepiece HWF 15x/16 mm  
for Oxion Inverso inverted microscopes



**AE.5120**  
Camera Adaptor for Oxion Inverso  
23.2 mm Tube



**OX.9850**  
Camera Adaptor with 0.5x lens for Oxian  
Oxion Inverso microscope



**DC.1326**  
Camera Adaptor | C-Mount 0.35x



**DC.1320 | DC.1321**  
C-mount 1x adapter without objective  
for standard  $\varnothing$  23.2 mm tubes

DIGITAL CAMERA FOR MICROSCOPY



**KOPTICS**  
IMAGING SYSTEMS

**KTS-AF-HDMI**  
Sensor Sony IMX | 1920x1080 | HDMI  
USB | Auto Focus ROI On or Off



**KOPTICS**  
IMAGING SYSTEMS

**KTS-DV-HDMI**  
Sensor CMOS | 1920x1080 | IR Sensor  
Measure | HDMI



**KOPTICS**  
IMAGING SYSTEMS

**KTS-VGA-CIS**  
960 x 540 | Measure | C-Mount | USB + Mouse  
Gambar & Video | Zoom Digital 1x-10x



**KOPTICS**  
IMAGING SYSTEMS

**KTS-VGA-CAM**  
1920 x 1080 | C-Mount | USB + Mouse  
Gambar & Video | Zoom Digital 1x-10x

MAGNIFYING LAMPS



**OOTSUKA**

**SKK-B | SKKL-B**  
Magnifier Lens : 2x, 4x, 6x, 8x, 10x



**OOTSUKA**

**SKK-F | SKKL-F**  
Magnifier Lens : 2x, 4x, 10x



**OOTSUKA**

**Barlight (Light for Inspection)**  
White LED 7 pcs | 8W  
IP40 (indoor use only)



**OOTSUKA**

**ENVL-B | ENVL-F**  
LED Illuminated Magnifier  
2x, 4x, 10x



**OOTSUKA**

**ENVL-FL**  
F-Type | Free Arm Illuminated Magnifier  
2x, 4x | 10W | Arm Length 1000mm



**OOTSUKA**

**ENVL-CL**  
Epi-illumination around the lens | 2x, 4x  
Turn on/off or/dim the lighting



**OOTSUKA**

**O-LIGHTIII-LED**  
Fluorescent tube lighting magnifier  
2x, 3.5x | 9W | Recta-System Lens



**OOTSUKA**

**BORELOUPE F | magnification of 2x/3x**  
LED illuminated loupe for checking holes,  
grooves, and inside walls

BORESCOPE | ENDSCOPE



**COANTEC**

**M3-6015 | M3-2810**  
Probe Diameter : 2.8mm, 6mm | LED  
Articulation 360° all-way



**COANTEC**

**E5-PRO 6015**  
Optic Fiber Light Guiding  
Probe Diameter : 6mm | DOF : 10-100mm



**MISUMI**  
Solutions for Industry

**Digital CMOS Endoscope**  
720P | LED Light | USB2.0  
White LED x 6 pcs | Rolling Shutter



**Vision**  
ENGINEERING


**CamB | Handheld Digital Magnifier**  
Mag. up to 20x | 1280 x 720  
Store up 20K images | 4.3" colour display

MIRUC



**MIRUC**

**Measure Scope**  
Microscopes essential to all industrial  
manufacturing, inspection



**MIRUC**

**Dovetail Stage**  
Sliding unit that can be used in a variety of  
position settings



**MIRUC**


**Slide Operation Dovetail Stage**  
Slide operation dovetail stage is a highly  
accurate dovetail stage



**MIRUC**

**Air Pit**  
Advanced vacuum pickup instrument that is  
widely used in many industries

VISION



**Swift PRO Duo**  
a versatile and exceptionally intuitive manual optical & video measuring system



**TVM35**  
Accurate 2D measurement within the field of view (FOV)

3D Measurement



Express Measurement




**Mantis Elite**  
Ergonomic eyepieceless stereo microscope magnification options up to 20x



**Evo Cam II**  
Full-HD Digital Microscope 1080p/60fps | Mag. up to 300x

Visual Inspection Full HD



STARRET

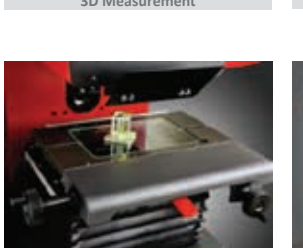


**VB400**  
Vertical Bench Top Optical Comparator



**KineMic KMR-FOV-M3**  
Video microscope incl. video camera, fixed magnification telecentric lens

3D Measurement



Express Measurement




Spesial Features & Combination Machine



Super Impose, Opacity, Barcode Reader, Edge Ditection, Geotagging, IP Camera.



Product	MSRP	Resolution	Magnification	Interface	Measurement	Polarizer	FLC	AMR+EDOF	Working Distance	Special Features*
<b>Dino-Lite Basic / Premier / WiFi</b>										
AF3113T(W)	Call us	640x480	10x-50x, 200x	WiFi, USB 2.0	-	-	-	-	Standard	Need WF20
AM4515ZT		1280x1024	10x-50x, 220x	USB 2.0	-	-	-	-	Standard	
AM4515ZTL		1280x1024	10x-90x	USB 2.0	-	-	-	-	Long	
AF4915ZT		1280x1024	20x-220x	WiFi, USB 2.0	-	-	-	-	Standard	Need WF20
Product	MSRP	Resolution	Magnification	Interface	Measurement	Polarizer	FLC	AMR+EDOF	Working Distance	Special Features*
<b>Dino-Lite Edge (USB), Eyepiece &gt; 5MP series</b>										
AM7515MT2A	Call us	2592x1944	100x-200x	USB 2.0	-	-	-	-	Standard	COAXIAL+AMR
AM7515MT4A		2592x1944	415x-470x	USB 2.0	-	-	-	-	Standard	COAXIAL+AMR
AM7515MT8A		2592x1944	700x-900x	USB 2.0	-	-	-	-	Standard	COAXIAL+AMR
AM7915MZT		2592x1944	10x-220x	USB 2.0	-	-	-	-	Standard	AMR+EDOF
AM7915MZTL		2592x1944	10x-140x	USB 2.0	-	-	-	-	Long	AMR+EDOF
AM73915MZT		2560x1920	10x-220x	USB 3.0	-	-	-	-	Standard	FLC+AMR+EDOF
AM73915MZTL		2560x1920	5x-140x	USB 3.0	-	-	-	-	Long	FLC+AMR+EDOF
AM7025X		2560x1920	Bedasarkan Objective	USB 2.0	-	-	-	EDOF manual	Penyesuaian	U/ Bino & Trinocular
<b>Dino-Lite Edge (RCA), (VGA), (HDMI)</b>										
AM5212P/TT/PT	Call us	960x480	10x-220x	TV/RCA	-	-	-	-	Standard	
AM5216ZT		1280x720	10x-220x	VGA	-	-	-	-	Standard	Freeze Image
AM5216ZTL		1280x720	5x-140x	VGA	-	-	-	-	Long	Freeze Image
AM5018MZT		1280x720	1x-70x	VGA	-	-	-	-	Standard	Freeze Image
AM5018MZTL		1280x720	10x-220x	HDMI	-	-	-	-	Long	Freeze Image
AM5218MZT		1280x720	5x-220x	HDMI	-	-	-	-	Standard	Freeze Image
Product	MSRP	Head	Objective	Eyepiece	Lens	Total Magnification	Illumination	Stage Model	Special Features*	
<b>Euromex Biological Microscope</b>										
EC1105	Call us	Monokuler Digital	4x, 10x, 40x 100x	10x/18mm	Achromatic	40x, 100x, 400x, 1000x	LED	X-Y	digital camera included	
EC1151		Monokuler	4x, 10x, 40x 100x	10x/18mm	Achromatic	40x, 100x, 400x, 1000x	LED	X-Y	cable and batteries ready	
EC.1152		Binokuler	4x, 10x, 40x 100x	10x/18mm	Achromatic	40x, 100x, 400x, 1000x	NeoLED	X-Y	cable and batteries ready	
EC1153		Trinokuler	4x, 10x, 40x 100x	10x/18mm	Achromatic	40x, 100x, 400x, 1000x	NeoLED	X-Y	cable and batteries ready	
BB1152PLi		Binokuler	4x, 10x, 40x, 100x	10x/20mm	Plan Achromatic	40x, 100x, 400x, 1000x	NeoLED	X-Y Rackless	infinity optical system	
BB1153PLi		Trinokuler	4x, 10x, 40x, 100x	10x/20mm	Plan Achromatic	40x, 100x, 400x, 1000x	NeoLED	X-Y Rackless	infinity optical system	
IS1152PLi		Binokuler	4x, 10x, 40x, 100x	10x/22mm	Plan Achromatic	40x, 100x, 400x, 1000x	NeoLED	X-Y Rackless	iCare Sensor	
IS1153PLi		Trinokuler	4x, 10x, 40x, 100x	10x/22mm	Plan Achromatic	40x, 100x, 400x, 1000x	NeoLED	X-Y Rackless	iCare Sensor	
BB1153PLPH		Trinokuler	10x, 20x, 40x, 100x	10x/20mm	Plan phase	40x, 100x, 400x, 1000x	NeoLED	X-Y Rackless	IOS objective, phase contrast	
OX2053PLPH		Trinokuler	10x, 20x, 40x	10x/22mm	Plan phase	100x, 200x, 400x	LED	X-Y Rackless	Phase Contrast Inverted	
Product	MSRP	Head	Zoom Objective	Eyepiece	Working Distance	Total Magnification	Illumination	Stand Model	Special Features*	
<b>Euromex Stereo Microscope</b>										
SB1902	Call us	Binokular	0,7x - 4,5x	10x/20mm	100 mm	7x - 45x	LED	Rack & pinion	Zoom objective	
SB1903P		Trinokular	0,7x - 4,5x	10x/20mm	100 mm	7x - 45x	LED	Pillar	Zoom objective	
SB1903U		Trinokular	0,7x - 4,5x	10x/20mm	100 mm	7x - 45x	LED	Universal	Zoom objective	
NZ1902S		Binokular	0,67x - 4,5x	10x/22mm	110 mm	6,7x - 45x	LED	Rack & pinion	Nexius Zoom objective	
NZ1903S		Trinokular	0,67x - 4,5x	10x/22mm	110 mm	6,7x-45x, up to 180x (optional)	LED	Rack & pinion	Nexius Zoom objective	
NZ1703PL		Trinokular	0,65x - 5,5x	10x/23mm	110 mm	6,5x-55x, up to 220x (optional)	LED	Pillar	Nexius Zoom objective	
NZ1703GEMEL		Trinokular	0,65x - 5,5x	10x/23mm	110 mm	6,5x-55x, up to 220x (optional)	LED	Ergonomic	For Gemological	
Product	MSRP	Head	Objective	Eyepiece	Lens	Total Magnification	Illumination	Stage Model	Special Features*	
<b>Euromex Material Science &amp; Polarize</b>										
OX2153PLM		Trinokular	5x, 10x, 20x, 50x 100x	10x/20mm	Plan Achromatic & semi apochromat	40x, 100x, 200x, 500x, 1000x	Halogen	Mechanical	Polarize & semi-apo lens	
IS1053PLMi		Trinokular	5x, 10x, 20x, 50x	10x/20mm	Plan Achromatic	50x, 100x, 200x, 500x	NeoLED	X-Y Rackless	Polarize Top Light	
IS1052PLPOLi		Binokular	4x, 10x, 20x, 40x	10x/22mm	Plan Achromatic	40x, 100x, 200x, 400x	NeoLED	360° Rotatable	Polarize Down Light	
IS1053PLPOLRi		Trinokular	4x, 10x, 20x, 40x	10x/22mm	Plan Achromatic	40x, 100x, 200x, 400x	NeoLED & Halogen	360° Rotatable	Polarize Uper Down Light	
Product	MSRP	Description								
<b>Dino-Lite Stand, Table stage, Holder, Special lighting source</b>										
RK06E	Call us	Professional stand								
RK10VXEXFXPX		Precision stand fine focus adjustment set								
RK05		Stand with moveable degree								
MS33A		Ergonomic stand								
RK10		Precision stand fine focus adjustment								
SSM2		Petri dish holder for RK10								
MS15XS2		Inspection stage XY-R								
BLCDW		Brightfield and Dardfield backlight								
WF20/WF20W		Dino-Lite adapter connect for AF series								
HDE01		Hand adjustable holder								
Product	MSRP	Description								
<b>Euromex Camera, Lighting, Magnifier Scope</b>										
VC.3036 +Adaptor	Call us	Resolution 3264 x 1836 (6MP), interface HDMI & USB 2.0, 1080p video mode, sony sensor, image focus 4 software								
DC.5000c		Resolution 2592 x 1944 (5MP), interface USB 2.0, CMOS sensor, image focus 4 software								
LE.1973 (Ring Light)		144 LEDs light, 6.500 K color temperature, 23.000 lux, mounting diameter 25-61 mm								
LE.5208		1x 2 W LED (40 Watt halogen equivalent), 6.500 K color temperature, 18.000 lux.								
PB.5010		Magnification 40x, LED illumination, field of view 3,6 mm								



## Our Contact

---

