



Vol. 01-2020

# VISUAL

## Technology

for INDUSTRY



Microscope.id berawal tahun 2017 dan telah sukses dipercaya oleh ratusan pelanggan kami secara nasional meliputi profesional science, industri dan pemerintahan.



### **Visi**

Mewujudkan solusi terbaik dengan mikroskop dengan analisa visual dan measuring system.

### **Misi**

Memberikan solusi dan konsultasi terbaik untuk pelanggan kami.

### **Nilai :**

- **Pengetahuan ( Knowledge )**
- **Solusi ( Solution )**
- **Kepuasan pelanggan ( Customer Satisfaction )**

Layanan visual kami meliputi layanan analisa masalah dan pengembangan produk serta pengukuran dengan teknik visual (gambar) menggunakan produk mikroskop dan visual measuring system.

Solusi kami berikan adalah konsultasi melalui product demo, email, telephone dan live chat.

# Dino-Lite

Mikroskop digital Dino-Lite adalah perangkat mikroskop portabel yang luar biasa dan mudah digunakan untuk inspeksi, pengujian, dan dokumentasi. Saat gambar ditampilkan pada monitor HP ataupun PC, pengguna dapat memeriksa dan menganalisis gambar bahkan melakukan pengukuran dimensi objek yang dilihat.

Berbagai fitur pada software Dino-Lite merupakan hasil perkembangan yang luar biasa seperti transparent mode, edge tracking, snap mode measurement dan comparison.

## All Models Include

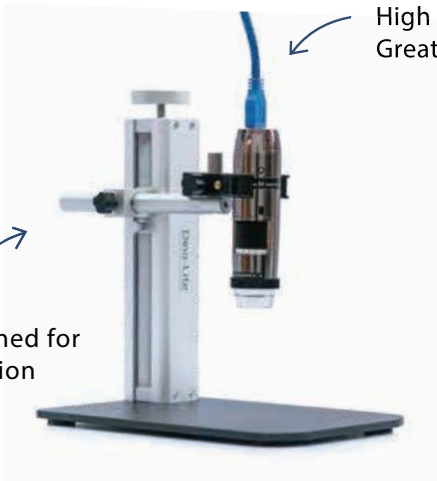
1 YEAR WARRANTY • FREE TECH SUPPORT

AF4915ZT + WF20  
USB & Wireless

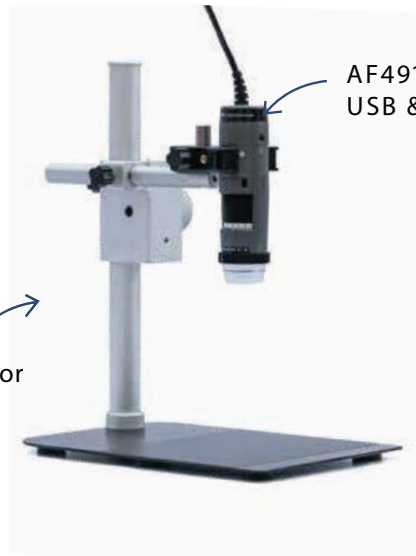


AM73915MZT  
High Resolution &  
Great Frame Rate

RK10  
Designed for  
Precision



RK-06  
Designed for  
Versatility



AF4915ZT  
USB & Wireless Ready

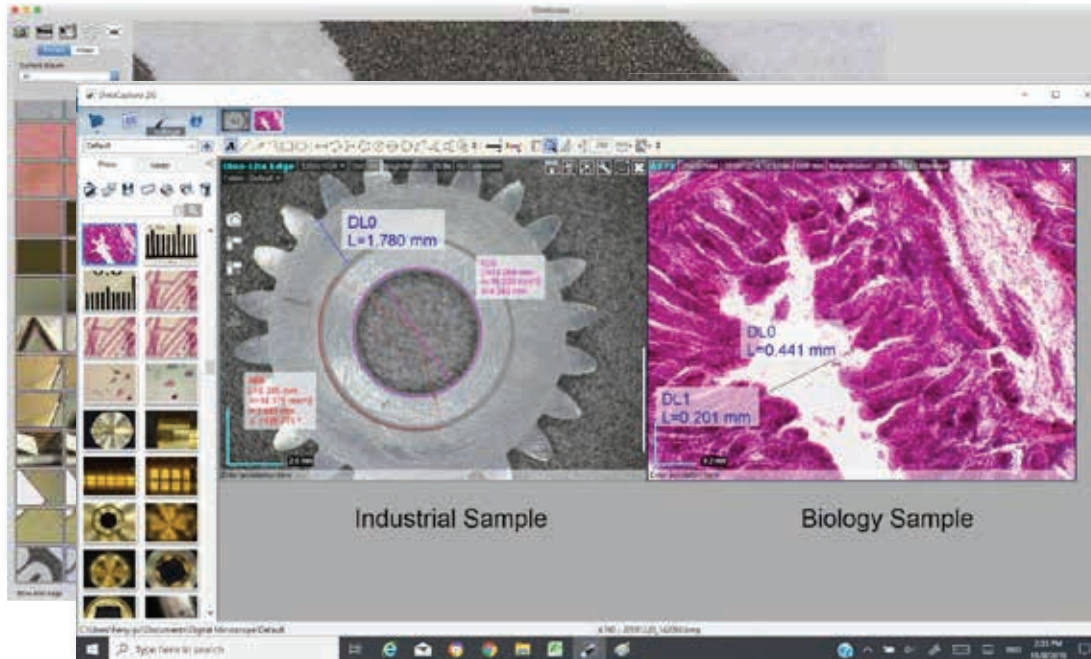
## Visit us online at [microscope.id](http://microscope.id)

- Product Demos
- Training Videos
- Tech Support
- Products Information
- Software Updates
- Specification Information
- ... and more !

# Key Features

## Capture Images & Video

Easily save images, videos, and time-lapse videos using the included license-free software.



### Preview Window Tools

- Snapshot
- Video Recorder
- Time-Lapse Video
- EDR-Extended Dynamic Range \*
- EDOF-Extended Depth of Field \*
- Microtouch \*
- White Balance \*
- Auto Exposure Setting
- LED Control \*
- Flexible LED Control \*
- Camera Adjustment Setting
- Maximize Window
- Close Window

\* Feature can only be found on specific Dino-Lite models.

## Adjust Image Settings

Use the software settings panel to adjust lighting, colors, brightness, contrast, and other settings.

## Connectivity Types

Available connection types include USB 2.0, USB 3.0, TV(RCA), VGA, and HDMI.

## Magnification Ranges

Our standard magnification range is 10x-220x. Select models go up to 900x.

## Housing Types

Our ABS and medical-grade plastic bodies are very reliable and strong. For enhanced protection, the metal body consists of aerospace grade machine tooled aluminum.

## Lighting Control

Sometimes light can be a damaging factor. Many Dino-Lite models have a built-in adjustable polarizer for reducing glare. Diffuser caps, lighting accessories, and exposure adjustments also help to achieve optimal results.

## Measurement & Annotation

Most models have measurement capability for lines, circles, angles, and more. Snap measurements to any edge for ease of use. You can also add annotations for easy file organization.

## Special Lighting - IR/UV/Fluorescence

Models are available with fluorescence, UV, and IR. A small sample is listed here. Contact us for more information.

Series	Excitation Wavelength	Emission Filter	Series	Excitation Wavelength	Emission Filter
FUW (UV)	375nm	N/A	YFGW	525nm	570nm
GFBW	480nm	510nm	DFRW	620nm	650nm
GRFBY	480/575	510/610	FJT (IR)	940nm	N/A





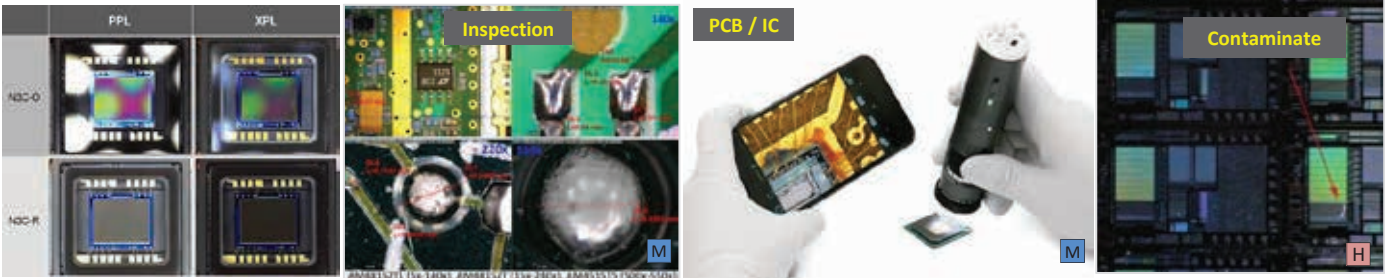
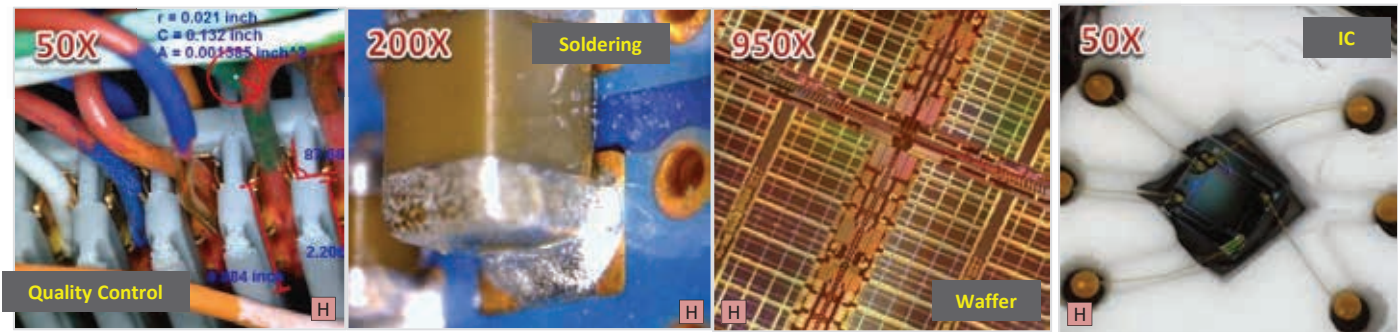


Application :

- Microchip Inspection (Dimension)
- Component Inspection
- Quality Control & Failure Analysis
- PCBA/IC Inspection
- Soldering
- Automatic Inspection System
- Silicon Wafer Inspection
- Etc ...

Mikroskop digital Dino-Lite adalah perangkat mikroskop portabel yang digunakan oleh industri elektronik untuk inspeksi, pengujian, dan dokumentasi. Saat gambar ditampilkan pada monitor HP ataupun PC, pengguna dapat memeriksa dan menganalisis gambar bahkan melakukan pengukuran dimensi objek yang dilihat.

Berbagai fitur pada software Dino-Lite merupakan hasil perkembangan yang luar biasa seperti transparant mode, edge tracking, snap mode measurement dan comparison. Series Med-High sudah dilengkapi "ESD SAFE"



High Series 200X



AM73915M2T  
10~220X | 5MP | USB3.0 | ESD Safe  
Metal Housing | Measurement | Gambar & Video | EDOF | EDR



RK10VXEXFPX  
Professional Stand  
22 cm (L) x 15 cm (W) x 23 cm (H)



N3CA  
Coaxial Light Cap | ZT & ZTL series  
Dia 3 cm | Polycarbonate

High Series 950X



AM7515MT8A  
700~900X | 5MP | USB2.0 | FLC  
Measurement | Gambar & Video  
Brightfield / Darkfield | AMR



RK06E  
Professional Stand  
22 cm (L) x 15 cm (W) x 27 cm (H)



MS15X-S2  
Inspection Stage | 5 cm diameter  
10 cm long x 8 cm wide | Vernier Scale

Mid Series 200X



AM4915ZT  
20~220X | 200X | 1.3MP | USB2.0/WiFi  
ESD Safe | Plastic Housing | EDOF | EDR  
Measurement | Gambar & Video | Polarizer



RK05  
Moveable X 30 Degree |  
14cm (L) x 11cm (W) x  
16.5cm (H)



N3CR  
Soft Ring Illuminator | Max Distance 6 Cm  
Dia 6.5cm | Polycarbonate Sputt Alu Coat

Basic Series 200X



AF3113T  
20x~50x, 200x | VGA (640x480)  
USB2.0/WiFi | Color CMOS | Plastic Housing  
Measurement | Gambar & Video



MS33A  
Ergonomic Stand

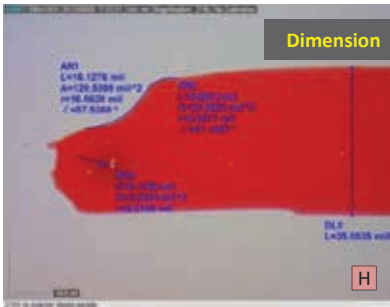


WF20  
Wi-Fi Streamer | 20M range  
Windows, Android, iOS | 180 minutes

Dalam industri plastik dan karet, Dino-Lite dapat memeriksa area yang kecil seperti cacat, flashing, atau spot-spot kontaminasi lainnya, dengan mengambil gambar dan video untuk didokumentasikan, bahkan melakukan pengukuran dengan perangkat lunak Dino-Lite.

Dino-Lite digunakan untuk pengukuran dengan mudah lewat HP dan PC. Bentuk yang portable juga mengurangi stres dan kelelahan operator bekerja dalam jangka waktu yang lama.

- Aplikasi :
- Coloring
  - Dimension
  - Rolling Diest
  - Scratch
  - Crack
  - Mold Injection
  - Etc ...



High Series 200X



AM73915MZT  
10~220X | 5MP | USB3.0 | ESD Safe  
Metal Housing | Measurement | Gambar & Video | EDOF | EDR



RK10VXEXFPX  
Professional Stand  
22 cm (L) x 15 cm (W) x 23 cm (H)



MS15X-S2  
Inspection Stage | 5 cm diameter  
10 cm long x 8 cm wide | Vernier Scale

Mid Series 200X



AM4815ZT  
20~220X (ZT) | 1.3MP | USB2.0  
ESD Safe | Plastic Housing | EDOF | EDR  
Measuring | Gambar & Video | Polarizer



RK10VXEXFPX  
Professional Stand  
22 cm (L) x 15 cm (W) x 23 cm (H)



N3CA  
Coaxial Light Cap | ZT & ZTL series  
Dia 3 cm | Polycarbonate

Basic Series 200X



AM4915ZT  
20~220X | 200X | 1.3MP | USB2.0/WiFi  
ESD Safe | Plastic Housing | EDOF | EDR  
Measurement | Gambar & Video | Polarizer



RK10VXEXFPX  
Professional Stand  
22 cm (L) x 15 cm (W) x 23 cm (H)



N3CR  
Soft Ring Illuminator | Max Distance 6 Cm  
Dia 6.5cm | Polycarbonate Sputt Alu Coat

Basic Series 200X



AF3113T  
20x~50x, 200x | VGA (640x480)  
USB2.0/WiFi | Color CMOS | Plastic Housing  
Measurement | Gambar & Video



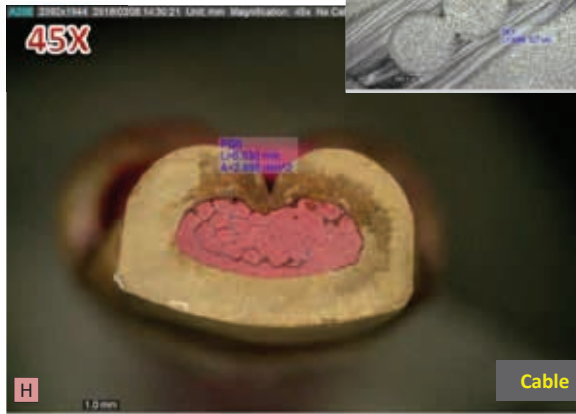
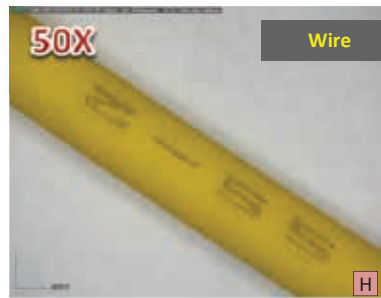
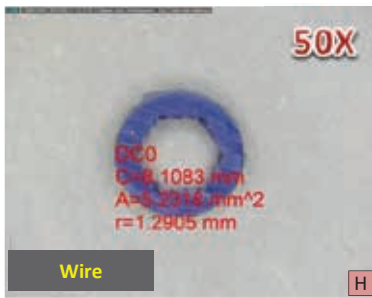
RK06E  
Professional Stand  
22 cm (L) x 15 cm (W) x 27 cm (H)



WF20  
Wi-Fi Streamer | 20M range  
Windows, Android, iOS | 180 minutes







### Aplikasi :

- *Measuring Dimension*
- *Cable Inspection*
- *Wire Inspection*
- *Defect*
- *Barry*
- *Etc ...*

Industri kabel sangat ketat dalam mencegah kontaminasi dan baret pada material. Industri ini sangat memerlukan Dino-Lite karena kecepatan dan portabilitas untuk mendapatkan gambar, video, dan pengukuran lapisan isolator.

Berbagai fitur pada software Dino-Lite merupakan hasil perkembangan yang luar biasa seperti transparant mode, edge tracking, snap mode measurement dan comparison.

### Eyepiece Series untuk Trinocular



Euromex Calibration Scale  
AE-110CALIB 1mm/100  
(AE-1110)



Dino-Eye AM7025X  
5MP | USB2.0  
Measuring | Gambar & Video  
23mm, 30mm, 30.5mm diameter adaptor

### High Series 200X



AM73915MZT  
10~220X | 5MP | USB3.0 | ESD Safe  
Metal Housing | Measurement | Gambar & Video | EDOF | EDR



RK10VXEXFPX  
Professional Stand  
22 cm (L) x 15 cm (W) x 23 cm (H)



MS15X-S2  
Inspection Stage | 5 cm diameter  
10 cm long x 8 cm wide | Vernier Scale

### Mid Series 200X



AM4815ZT  
20~220X (ZT) | 1.3MP | USB2.0  
ESD Safe | Plastic Housing | EDOF | EDR  
Measuring | Gambar & Video | Polarizer



RK10VXEXFPX  
Professional Stand  
22 cm (L) x 15 cm (W) x 23 cm (H)



N3CA  
Coaxial Light Cap | ZT & ZTL series  
Dia 3 cm | Polycarbonate



AM4915ZT  
20~220X | 200X | 1.3MP | USB2.0/WiFi  
ESD Safe | Plastic Housing | EDOF | EDR  
Measurement | Gambar & Video | Polarizer



RK10VXEXFPX  
Professional Stand  
22 cm (L) x 15 cm (W) x 23 cm (H)



N3CR  
Soft Ring Illuminator | Max Distance 6 Cm  
Dia 6.5cm | Polycarbonate Sputt Alu Coat

### Basic Series



AF3113T  
20x~50x, 200x | VGA (640x480)  
USB2.0/WiFi | Color CMOS | Plastic Housing  
Measurement | Gambar & Video

WF20 not include



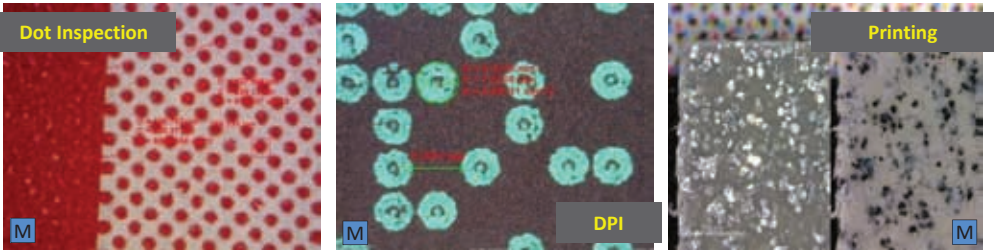
RK06E  
Professional Stand  
22 cm (L) x 15 cm (W) x 27 cm (H)



WF20  
Wi-Fi Streamer | 20M range  
Windows, Android, iOS | 180 minutes

Aplikasi :

- Maintenance Process
- Defect Printing
- Color Registration
- Rolling Diest
- Printing sample
- Dot Inspection
- Etc ...



Dengan mikroskop Dino-Lite, industri grafis telah menemukan cara untuk memeriksa pencetakan, pelat cetak dan struktur kertas. Perusahaan percetakan sangat antusias dengan Dino-Lite untuk kontrol kualitas pencetakan dan kertas.

Dino-Lite digunakan untuk pengukuran dengan mudah lewat HP dan PC. Dengan Dino-Lite kita dapat mengetahui DPI, Raster graphics, Anilox gravure cylinder apakah ada ketidak sesuaian dan mengetahui dimensi untuk analisa hasil.



High Series 200X



AM73915MZT  
10~220X | 5MP | USB3.0 | ESD Safe  
Metal Housing | Measurement | Gambar & Video | EDOF | EDR



RK10VXEXFPX  
Professional Stand  
22 cm (L) x 15 cm (W) x 23 cm (H)



N3CA  
Coaxial Light Cap | ZT & ZTL series  
Dia 3 cm | Polycarbonate

High Series 450X



AM7515MT4A  
415~470X | 5MP | USB2.0 | FLC  
Measurement | Gambar & Video  
Brightfield / Darkfield | AMR



RK10VXEXFPX  
Professional Stand  
22 cm (L) x 15 cm (W) x 23 cm (H)



MS15X-S2  
Inspection Stage | 5 cm diameter  
10 cm long x 8 cm wide | Vernier Scale

Mid Series 200X



AM4915ZT  
20~220X | 200X | 1.3MP | USB2.0/WiFi  
ESD Safe | Plastic Housing | EDOF | EDR  
Measurement | Gambar & Video | Polarizer



RK06E  
Professional Stand  
22 cm (L) x 15 cm (W) x 27 cm (H)



BLZW1  
Light Inspection Stage | Polarizer  
USB & DC adapter | 10 x 9 x 2cm

Basic Series 200X



AF3113T  
20x~50x, 200x | VGA (640x480)  
USB2.0/WiFi | Color CMOS | Plastic Housing  
Measurement | Gambar & Video

WF20 not include



RK06E  
Professional Stand  
22 cm (L) x 15 cm (W) x 27 cm (H)



WF20  
Wi-Fi Streamer | 20 m range  
Windows, Android, iOS | 180 minute





Industri food & beverages sangat ketat dalam mencegah kontaminasi pada makanan, kebocoran pada kemasan serta kontaminasi material asing dapat di analisa dan dilihat dengan mudah oleh Dino-Lite. Pada industri ini sangat dipermudah dalam penggunaan Dino-Lite karena kecepatan dan portabilitas untuk mendapatkan gambar dan video yang diinginkan.

Dino-Lite digunakan untuk pengukuran dengan mudah lewat Hp dan PC. Bentuk yang portable juga mengurangi stres dan kelelahan operator bekerja dalam jangka waktu yang lama.

#### Eyepiece Series

Untuk Bino/Trinocular



Euromex Calibration Scale  
AE-110CALIB 1mm/100 (AE-1110)



Dino-Eye AM7025X  
5MP | USB2.0 | Measuring | Gambar & Video | 23mm, 30mm, 30.5mm diameter adaptor

#### Aplikasi :

- Size Inspection
- Base Material Inspection
- Contaminate
- Packaging
- Etc ..



#### High Series 200X



AM73915MTZT  
10~220X | 5MP | USB3.0 | ESD Safe  
Metal Housing | Measurement | Gambar & Video | EDOF | EDR



RK10VXEXFXPX  
Professional Stand  
22 cm (L) x 15 cm (W) x 23 cm (H)



N3CA  
Coaxial Light Cap | ZT & ZTL series  
Dia 3 cm | Polycarbonate

#### High Series 450X



AM7515MT4A  
4150~470X | 5MP | USB2.0 | FLC  
Measuring | Gambar & Video  
Brightfield / Darkfield | AMR



RK10VXEXFXPX  
Professional Stand  
22 cm (L) x 15 cm (W) x 23 cm (H)



MS15X-S2  
Inspection Stage | 5 cm diameter  
10 cm long x 8 cm wide | Vernier Scale

#### Mid Series 200X



AM4915ZT  
20~220X | 200X | 1.3MP | USB2.0/WiFi  
ESD Safe | Plastic Housing | EDOF & EDR  
Measurement | Gambar & Video | Polarizer



RK10VXEXFXPX  
Professional Stand  
22 cm (L) x 15 cm (W) x 23 cm (H)



BLZW1  
Light Inspection Stage | Polarizer  
USB & DC adapter | 10 x 9 x 2cm

#### Basic Series 200X



AF3113T  
20x~50x, 200x | VGA (640x480)  
USB2.0/WiFi | Color CMOS | Plastic Housing  
Measurement | Gambar & Video

WF20 not include



RK-06E  
Professional Stand  
22 cm (L) x 15 cm (W) x 27 cm (H)



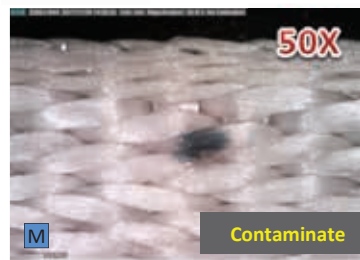
WF20  
Wi-Fi Streamer | 20M range  
Windows, Android, iOS | 180 minutes

**Aplikasi :**

- *Failure Textile Inspection*
- *Composite Fiber Inspection*
- *Coloring*
- *Contaminate*
- *Thread Count Textile*
- *Etc ...*

Dino-Lite membuat para profesional industri Tekstil dan Komposit melakukan lebih banyak hal dengan mudah seperti menggunakan pencahayaan UltraViolet model Dino-Lite untuk melakukan inspeksi, melihat kontaminasi, thread counting, analisa detail lapisan dan penyebab cacat pada material benang dan kain secara mudah.

Dino-Lite digunakan untuk pengukuran dengan mudah lewat HP dan PC. Berbagai fitur pada software Dino-Lite merupakan hasil perkembangan yang luar biasa seperti transparant mode, edge tracking, snap mode measurement dan comparison.



**High Series 200X**



AM73915MZZT  
10~220X | 5MP | USB3.0 | ESD Safe  
Metal Housing | Measurement | Gambar & Video | EDOF | EDR



RK10VXEXFPX  
Professional Stand  
22 cm (L) x 15 cm (W) x 23 cm (H)



N3CA  
Coaxial Light Cap | ZT & ZTL series  
Dia 3 cm | Polycarbonate

**Mid Series 950X**



AM7515MT8A  
700~900X | 5MP | USB2.0 | FLC  
Measuring | Gambar & Video  
Brightfield / Darkfield | AMR



RK10VXEXFPX  
Professional Stand  
22 cm (L) x 15 cm (W) x 23 cm (H)



MS15X-S2  
Inspection Stage | 5 cm diameter  
10 cm long x 8 cm wide | Vernier Scale

**Mid Series 200X**



AM4915ZT  
20~220X | 200X | 1.3MP | USB2.0/WiFi  
ESD Safe | Plastic Housing | EDOF | EDR  
Measurement | Gambar & Video | Polarizer



RK06E  
Professional Stand  
22 cm (L) x 15 cm (W) x 27 cm (H)



BLZW1  
Light Inspection Stage | Polarizer  
USB & DC adapter | 10 x 9 x 2cm

**Basic Series 200X**



AF3113T  
20x~50x, 200x | VGA (640x480)  
USB2.0/WiFi | Color CMOS | Plastic Housing  
Measurement | Gambar & Video

WF20 not include



RK05  
Moveable x 30 Degree |  
14cm (L) x 11cm (W) x  
16.5cm (H)



WF-20  
Wi-Fi Streamer | 20 m range  
Windows,Android,iOS | 180 minute



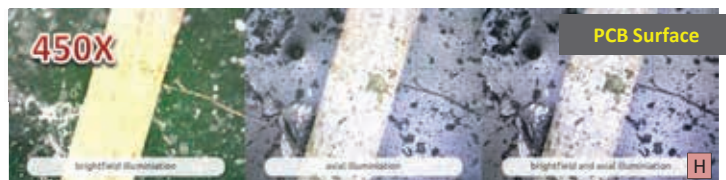
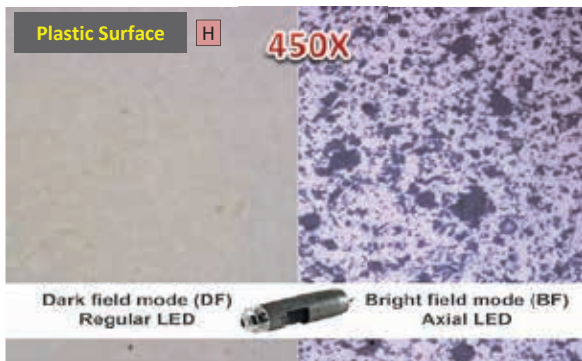


Dalam industri otomotif dan metal, Dino-Lite dapat memeriksa area yang kecil seperti cacat, keausan, atau spot-spot lainnya, retak, kontaminasi material dengan mengambil gambar dan video untuk didokumentasikan, bahkan melakukan pengukuran dengan perangkat lunak Dino-Lite.

Dino-Lite digunakan untuk pengukuran dengan mudah lewat HP dan PC. Bentuk yang portable juga mengurangi stres dan kelelahan operator bekerja dalam jangka waktu yang lama.

### Aplikasi :

- Filter Contamination Inspection
- Welding Penetration
- Corrosion Inspection
- Measuring Parts
- Defect inspection
- Cracks Parts



### High Series 200X



AM73915M2T  
10~220X | 5MP | USB3.0 | ESD Safe  
Metal Housing | Measurement | Gambar & Video | EDOF | EDR



RK-10VXEXFPX  
Professional Stand  
22 cm (L) x 15 cm (W) x 23 cm (H)



N3CA  
Coaxial Light Cap | ZT & ZTL series  
Dia 3 cm | Polycarbonate

### High Series 450X



AM7515MT4A  
415~470X | 5MP | USB2.0 | FLC  
Measurement | Gambar & Video  
Brightfield / Darkfield | AMR



RK-10VXEXFPX  
Professional Stand  
22 cm (L) x 15 cm (W) x 23 cm (H)



MS15X-S2  
Inspection Stage | 5 cm diameter  
10 cm long x 8 cm wide | Vernier Scale

### Mid Series 200X



AM4915ZT  
20~220X | 200X | 1.3MP | USB2.0/WiFi  
ESD Safe | Plastic Housing | EDOF | EDR  
Measurement | Gambar & Video | Polarizer



RK-06E  
Professional Stand  
22 cm (L) x 15 cm (W) x 27 cm (H)



N3CR  
Soft Ring Illuminator | Max Distance 6 Cm  
Dia 6.5cm | Polycarbonate Sputt Alu Coat

### Basic Series 200X



AF3113T  
20x~50x, 200x | VGA (640x480)  
USB2.0/WiFi | Color CMOS | Plastic Housing  
Measurement | Gambar & Video  
WF20 not include



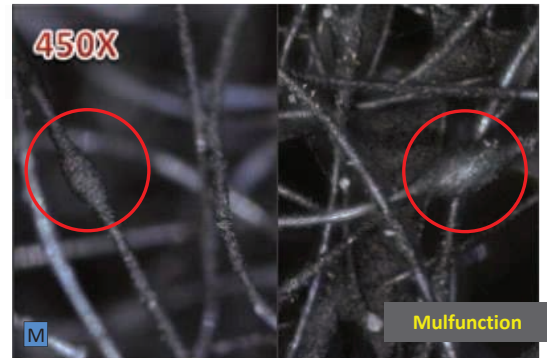
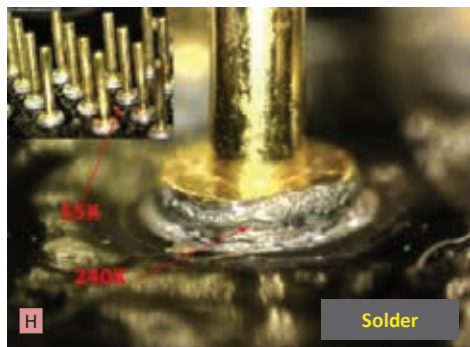
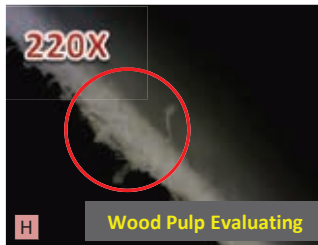
MS33A  
Ergonomic Stand



WF-20  
Wi-Fi Streamer | 20 m range  
Windows, Android, iOS | 180 minute







#### Aplikasi :

- Pest Control
- Wood Working
- Watch Repair
- Medical
- Skin Inspection
- Etc ...

Mikroskop Dino-Lite memberikan kemudahan para pengguna profesional pada fungsi pengukuran dengan gambar yang berkualitas tinggi.

Untuk item yang mungkin memiliki permukaan reflektif, kami merekomendasikan unit dengan pencahayaan terpolarisasi. Fitur polarisasi digunakan untuk mengurangi silau dan membantu menghilangkan 'titik panas' dari permukaan reflektif. Ini membantu memberikan pencahayaan seragam untuk membawa detail permukaan lebih banyak dengan silau minimal.

#### High Series 950X



AM7515MT8A  
700~990X | 5MP | USB2.0 | FLC  
Measurement | Gambar & Video  
Brightfield | Darkfield | AMR



RK-10VXEXFPX  
Professional Stand  
22 cm (L) x 15 cm (W) x 23 cm (H)



MS15X-S2  
Inspection Stage | 5 cm diameter  
10 cm long x 8 cm wide | Vernier Scale

#### Mid Series 200X



AM4915ZT  
20~220X | 200X | 1.3MP | USB2.0/WiFi  
ESD Safe | Plastic Housing | EDOF | EDR  
Measurement | Gambar & Video | Polarizer



RK-05  
Moveable X 30° Degree |  
14cm (L) x 11cm (W) x  
16.5cm (H)



WF-20  
Wi-Fi Streamer | 20 m range  
Windows, Android, iOS | 180 minute

#### Basic Series 200X



AF3113T  
20x~50x, 200x | VGA (640x480)  
USB2.0/WiFi | Color CMOS | Plastic Housing  
Measurement | Gambar & Video



RK-06E  
Professional Stand  
22 cm (L) x 15 cm (W) x 27  
cm (H)



BLZW1  
Light Inspection Stage | Polarizer  
USB & DC adapter | 10 x 9 x 2cm

#### Eyepiece Series

untuk Bino / Trinocular



Life Science  
Phase  
contrast



AE-110CALIB



Metallurgy



Polarization



Euromex VC3036  
5MP | USB2.0 & HDMI  
Measuring | Gambar & Video

## LIFE SCIENCE

 <p><b>EcoBlue</b></p> <p><b>EC.1152   EC.1153</b> Binocular   Trinocular   Achromatic NeoLED   Total 40x, 100x, 400x, 1000x</p>	 <p><b>BioBlue</b></p> <p><b>BB.1152-PLi   BB.1153-PLi</b> Binocular   Trinocular   NeoLED 40x, 100x, 400x, 1000x</p>	 <p><b>iScope</b></p> <p><b>IS.1152   IS.1153-PLi</b> Binocular   Trinocular   Brightfield Contrasts NeoLED   40x, 100x, 400x, 1000x</p>	 <p><b>BioBlue Phase Contrast</b></p> <p><b>BB.1153-PLPH</b> Trinocular   Rackless   Mechanical Stage NeoLED   100x, 200x, 400x, 1000x</p>
 <p><b>Digital Monocular</b></p> <p><b>EcoBlue</b></p> <p><b>EC.1105   EC.1151</b> Monocular   Achromatic   LED WF 10x/18mm   40x, 100x, 400x, 1000x</p>	 <p><b>Oxion Inverso Life Science</b></p> <p><b>OX.2053-PLPH</b> Trinocular   Phase Contrast   Inverted model 100x, 200x, 400x</p>	 <p><b>EduBlue Digital</b></p> <p><b>ED.1805-S</b> Binocular   Digital Head   10x, 20x, 40x Rack &amp; Pinion Stand   Diascopic   LED</p>	 <p><b>Simple Stereo</b></p> <p><b>P-10 LED (60.110)</b> Binocular   1x/3x Objectives   Compact Rack &amp; Pinion Stand   10x, 30x</p>

## STEREO MICROSCOPE

 <p><b>StereoBlue</b></p> <p><b>SB.1902   SB.1903-P</b> Binocular   Trinocular   Stereo Zoom 7x-45x   LED</p>	 <p><b>StereoBlue</b></p> <p><b>SB.1903-U</b> Trinocular   Stereo Zoom   7x-45x Universal Arm Stand</p>	 <p><b>NexusZoom Stereo Zoom</b></p> <p><b>NZ.1902-S   NZ.1903-S</b> Binocular   Trinocular   HWF 10x/22mm Double 3W LED   Total 6.7x-45x</p>	 <p><b>NexusZoom</b></p> <p><b>NZ.1703-PL   NZ.1703-GEML</b> Trinocular   6.5x-55x Standard HWF 10x eyepieces</p>
--	--	---	--

## MATERIAL SCIENCE &amp; POLARIZE

 <p><b>StereoBlue</b></p> <p><b>Metallurgy / Material Science</b></p> <p><b>OX.2153-PLM</b> Trinocular   50x, 100x, 200x, 500x, 1000x Brightfield with polarization</p>	 <p><b>iScope</b></p> <p><b>IS.1053-PLMi</b> Trinocular   EWF 10x/20mm   Plan PLMi Abbe Condenser   50x, 100x, 200x, 500x</p>	 <p><b>Polarization</b></p> <p><b>IS.1052-PLPOLi</b> Binocular   40x, 100x, 200x, 400x Rotatable Round Stage</p>	 <p><b>Polarization Upper Lighting</b></p> <p><b>IS.1053-PLPOLRI</b> Trinocular   40x, 100x, 200x, 400x Rotatable Round Stage   Epi-Illumination</p>
--	--	--	---

## MATERIAL SCIENCE &amp; POLARIZE

<p><b>Special</b></p>  <p><b>Delphi-X</b></p> <p><b>Metallurgical Material Science</b></p> <p><b>DX.2053-PLMi</b> Brightfield and Darkfield illumination EIS Optical System   50x, 100x, 200x, 500x</p>	<p><b>Special</b></p>  <p><b>Delphi-X</b></p> <p><b>DX.3153-APLi</b> EIS Optical System   Fluorescence 40x, 100x, 200x, 400x, 1000x</p>	<p><b>Special</b></p>  <p><b>Delphi-X</b></p> <p><b>DX.2053-PLMRI</b> Plan Apochromatic   Enhanced Infinity System 50x, 100x, 200, 500x, 1000x (optional)</p>	<p><b>Special</b></p>  <p><b>Delphi-X</b></p> <p><b>DX.3153-PLPHi</b> EIS Optical System   100x, 200x, 400x, 1000x Super Wide Field (SWF) eyepiece 25mm</p>
--	--	---	--

## CAMERA & LIGHTING



**VC.3036 | Adaptor DC.1326**  
1080P | HDMI | USB2.0 | SD Card  
6MP CMOS | C-mount interface



**DC.5000C**  
5MP | USB2.0 | 24 bits Color Rendering  
Low Signal/Noise Ration



**LE.1973 (Ring Light)**  
High Power 144 LEDs | 4 segment illumination  
Color 6500K | Remote Control



**LE.5208**  
Cold Light Source, Compact Dual 2W  
Color 6500K | 2 x 1W LED | 2 Flexible Arms

## MAGNIFIER SCOPE & ACCESORIES



**PB.5010**  
Measuring Microscope 40x



**PB.5014**  
Measuring Microscope 100x LED  
WF10 X 0.01 mm/17 mm



**PB.5044**  
Measuring magnifier 7x | Eyepiece  $\varnothing$ 18 mm  
Field of view 24 mm



**PB.5046**  
Cold Light Source, Compact Dual 2W  
Measuring magnifier 10x



**PB.5039**  
Achromatic | FOV 15mm  
Measuring magnifier 15x



**MT.5503**  
Table Clamp | Razor Blade Holder  
Wooden Cabinet | Stainless Steel



**AE.1110**  
Object Micrometer 1/100  
Min. Pitch 0,01 mm



**EDUPAD | EP.5000 WIFI**  
8" display | 5MP | 1280 x 720  
24 Bits | CMOS 1/2.5" | Gambar & Video

## OPTIONAL LENS



**BB.6020 (for BioBlue)**  
Wide field eyepiece WF20x/11 mm



**IS.6220 (for iScope)**  
WF20x/12 mm eyepiece  
 $\varnothing$  23.2 mm tube



**OX.6015**  
Wide field eyepiece HWF 15x/16 mm  
for Oxion Inverso inverted microscopes



**AE.5120**  
Camera Adaptor for Oxion Inverso  
23.2 mm Tube



**OX.9850**  
Camera Adaptor with 0.5x lens for Oxion  
Oxion Inverso microscope



**DC.1326**  
Camera Adaptor | C-Mount 0.35x



**DC.1320 | DC.1321**  
C-mount 1x adapter without objective  
for standard  $\varnothing$  23.2 mm tubes



## DIGITAL CAMERA FOR MICROSCOPY

**KOPTICS**  
IMAGING SYSTEMS



**KTS-AF-HDMI**  
Sensor Sony IMX | 1920x1080 | HDMI  
USB | Auto Focus ROI On or Off

**KOPTICS**  
IMAGING SYSTEMS



**KTS-DV-HDMI**  
Sensor CMOS | 1920x1080 | IR Sensor  
Measure | HDMI

**KOPTICS**  
IMAGING SYSTEMS



**KTS-VGA-CIS**  
960 x 540 | Measure | C-Mount | USB + Mouse  
Gambar & Video | Zoom Digital 1x-10x

**KOPTICS**  
IMAGING SYSTEMS



**KTS-VGA-CAM**  
1920 x 1080 | C-Mount | USB + Mouse  
Gambar & Video | Zoom Digital 1x-10x

## MAGNIFYING LAMPS

**OOTSUKA**



**SKK-B | SKKL-B**  
Magnifier Lens : 2x, 4x, 6x, 8x, 10x

**OOTSUKA**



**SKK-F | SKKL-F**  
Magnifier Lens : 2x, 4x, 10x

**OOTSUKA**



**Barlight (Light for Inspection)**  
White LED 7 pcs | 8W  
IP40 (indoor use only)

**OOTSUKA**



**ENVL-B | ENVL-F**  
LED Illuminated Magnifier  
2x, 4x, 10x

**OOTSUKA**



**ENVL-FL**  
F-Type | Free Arm Illuminated Magnifier  
2x, 4x | 10W | Arm Length 1000mm

**OOTSUKA**



**ENVL-CL**  
Epi-illumination around the lens | 2x, 4x  
Turn on/off or/dim the lighting

**OOTSUKA**



**O-LIGHTIII-LED**  
Fluorescent tube lighting magnifier  
2x, 3.5x | 9W | Recta-System Lens

**OOTSUKA**



**BORELOUPE F | magnification of 2x/3x**  
LED illuminated loupe for checking holes,  
grooves, and inside walls


## BOREScope | ENDOSCOPE

**COANTEC**




**M3-6015 | M3-2810**  
Probe Diameter : 2.8mm, 6mm | LED  
Articulation 360° all-way

**COANTEC**



**E5-PRO 6015**  
Optic Fiber Light Guiding  
Probe Diameter : 6mm | DOF : 10-100mm

**MISUMI**  
Inspection & Control



**Digital CMOS Endoscope**  
720P | LED Light | USB2.0  
White LED x 6 pcs | Rolling Shutter

**Vision**  
SOLUTIONS



**Camβ | Handheld Digital Magnifier**  
Mag. up to 20x | 1280 x 720  
Store up 20K images | 4.3" colour display


## MIRUC

**MIRUC**




**Measure Scope**  
Microscopes essential to all industrial  
manufacturing, inspection

**MIRUC**



**Dovetail Stage**  
Sliding unit that can be used in a variety of  
position settings

**MIRUC**



**Slide Operation Dovetail Stage**  
Slide operation dovetail stage is a highly  
accurate dovetail stage

**MIRUC**



**Air Pit**  
Advanced vacuum pickup instrument that is  
widely used in many industries

## VISION

**Vision**  
MEASUREMENT



**Swift PRO Duo**

a versatile and exceptionally intuitive manual optical & video measuring system

**Vision**  
MEASUREMENT



**TVM35**

Accurate 2D measurement within the field of view (FOV)

3D Measurement



Express Measurement



**Vision**  
MEASUREMENT



**Mantis Elite**

Ergonomic eyepieceless stereo microscope magnification options up to 20x

**Vision**  
MEASUREMENT



**Evo Cam II**

Full-HD Digital Microscope 1080p/60fps | Mag. up to 300x

Visual Inspection Full HD



## STARRET

**Starrett**



**VB400**

Vertical Bench Top Optical Comparator

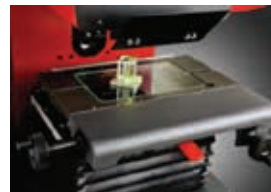
**Starrett**



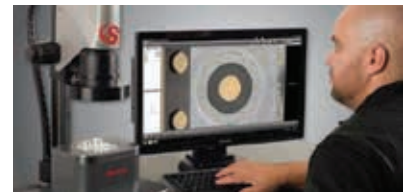
**KineMic KMR-FOV-M3**

Video microscope incl. video camera, fixed magnification telecentric lens

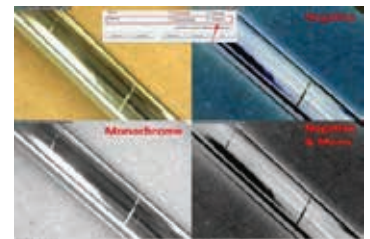
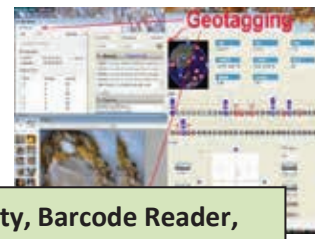
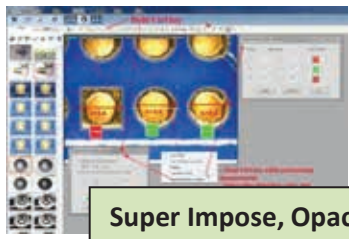
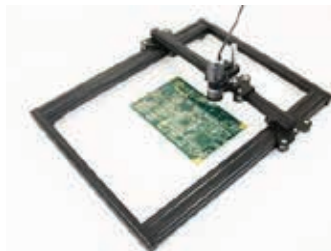
3D Measurement



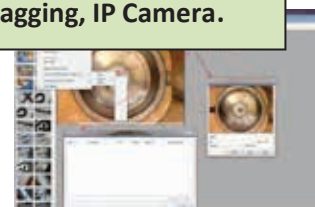
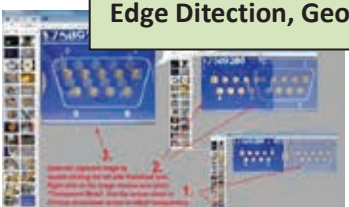
Express Measurement



## Spesial Features & Combination Machine



Super Impose, Opacity, Barcode Reader, Edge Ditection, Geotagging, IP Camera.



## Valid 2020







## Our Contact

---

