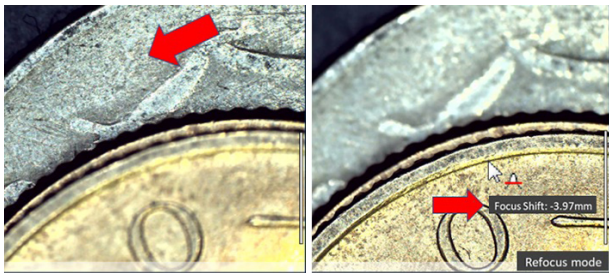


## AM4917MZT Dino-Lite EdgePLUS



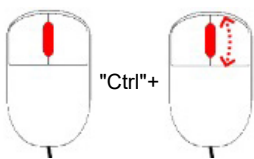
Dino-Lite EdgePLUS AM4917MZT merupakan series Dinolite yang mempunyai kemampuan mengetahui ketinggian / jarak Sumbu Z dengan menggunakan teknologi Shift EDOF yang disempurnakan fitur ini sangat dinantikan oleh para profesional.

Info Pengukuran Ketinggian / Kedalaman permukaan :



**Fokuskan ke titik 0 awal lalu tekan "Ctrl" + Scroll mouse**

**Informasi kedalaman akan muncul sebagai focus shift.**



Temukan tingkat reproduksibilitas warna yang baru, kualitas dan kejernihan gambar, dan kinerja terkini langsung dengan Dino-Lite EdgePLUS AM4917MZT.

Dengan dibekali fitur-fitur canggih, seperti FLC, AMR, EDOF, dan EDR, Dino-Lite EdgePLUS AM4917MZT adalah pilihan yang sangat baik untuk para profesional dengan standarisasi yang tinggi.

Catatan: **Fitur EDOF / EDR hanya tersedia pada OS. Windows.**



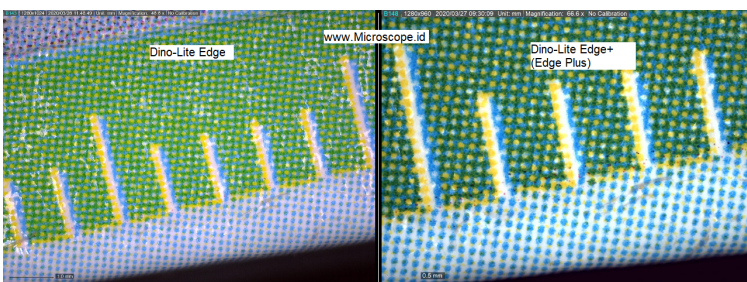


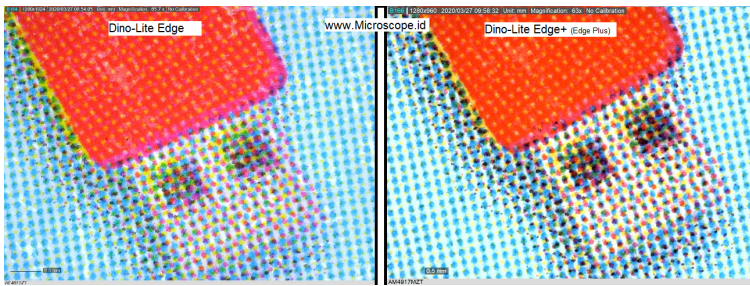
## SPECIFICATIONS

<b>Special feature</b>	Auto Magnification Reading, Ext Depth of Field, Ext Dynamic Range, FLC (Switch LED)
<b>ESD Safe</b>	Yes
<b>Measurement functionality</b>	Yes
<b>Housing</b>	Aluminum
<b>Cap Changeable</b>	Yes(AD / EDGE series)
<b>Polarizer</b>	Yes
<b>Number of LEDs</b>	8
<b>Light / LED type</b>	White
<b>Working distance</b>	Standart
<b>Magnification</b>	20~220x
<b>Resolution</b>	1.3 MP (1280 x 1024)
<b>Connection</b>	USB 2.0

## ADDITIONAL INFO

### Perbandingan Warna Dino-Lite AM4917MZT "Edge+" dengan Versi "Edge"





Model	AM4917MZT Dino-Lite Edge <sup>PLUS</sup>
Interface	USB 2.0
Product Resolution	1.3M pixels (1280x960)
Magnification	20x~220x
Frame Rate	30fps in 1.3MP, MJPEG 30fps in VGA, MJPEG
Saving Format	Image: DinoCapture2.0: BMP, GIF, PNG, MNG, TIF, TGA, PCX, WBMP, JP2, JPC, JPG, PGX, RAS, PNM DinoXcope: PNG, JPEG  Video: DinoCapture2.0: WMV, FLV, SWF DinoXcope: MOV
Lighting	8 white LEDs
Microtouch	Yes
Operating System Supported	Windows 10, 8, 7 Mac OS 10.11.6 or later
Calibration Function	Yes
Measurement Function	Yes
Unit Dimension	10.5cm (H) x 3.3cm (D)
Unit Weight	130g

**Information about working distance and field of view**

<b>M</b>	<b>WD</b>	<b>FOV (x)</b>	<b>FOV (y)</b>	<b>DOF</b>
20	59.5	19.5	14.7	5.36
30	32.9	13.0	9.8	2.58
40	20.2	9.8	7.3	1.56
50	13.2	7.8	5.9	1.07
60	9	6.5	4.9	0.79
70	6.4	5.6	4.2	0.62
80	4.8	4.9	3.7	0.5
90	4	4.3	3.3	0.42
100	3.5	3.9	2.9	0.36
110	3.3	3.6	2.7	0.31
120	3.5	3.3	2.4	0.27
130	3.8	3.0	2.3	0.24
140	4.3	2.8	2.1	0.22
150	4.9	2.6	2.0	0.2
160	5.6	2.4	1.8	0.18
170	6.4	2.3	1.7	0.17
180	7.3	2.2	1.6	0.15
190	8.2	2.1	1.5	0.14
200	9.2	2.0	1.5	0.13
210	10.2	1.9	1.4	0.13
220	11.3	1.8	1.3	0.12

M = magnification rate    WD = working distance (without front cap)    FOV = field of view    DOF= depth of field    Unit = mm

**How to acquire depth information with EdgePLUS AM4917**

DinoCapture 2.0 and selected Dino-Lite models offer an improved and more accurate functionality for the acquisition of depth information. Now, users can acquire depth information from the focus shift between two focal planes during live imaging.

**Requirements**

This functionality applies to Dino-Lite EdgePLUS AM4917MZT and AM4917MZTL. Also, please make sure to have DinoCapture 2.0 ver. 1.5.38 or latest version installed.

If you need to update DinoCapture 2.0, [click here](#) and download the latest version.