

FLUORESCENCE MODELS

AM4115T-CFVW Dino-Lite Premier



Dino-Lite AM4115T-CFVW mikroskop genggam digital dilengkapi dengan fluoresense UV-LED yang cerdas mengintegrasikan 400nm khusus lampu LED dan eksitasi tipe high-pass filter emisi yang memotong pada 430nm menjadi mikroskop digital Dino-Lite. Dino-Lite AM4115T-CFVW dibekali dengan kualitas tinggi 1,3 megapiksel sensor yang memungkinkan pengguna untuk memeriksa objek dengan yang terbesar dari rincian. Dengan model ini, pengguna dapat melihat benda-benda di berbagai perbesaran tergantung jarak, dengan perbesaran maksimal lebih dari 200x di bawah lampu fluoresense UV. Hal ini juga dilengkapi dengan mudah digunakan MicroTouch pemicu (menyentuh sensor statis sensitive). The MicroTouch fitur pada mikroskop genggam digital memberikan pengguna pilihan untuk mengambil gambar langsung dari ruang lingkup itu sendiri. The MicroTouch dirancang untuk meminimalkan blur saat pengambilan gambar dengan mikroskop.

Bermanfaat untuk penelitian dengan cyan dan berbagai fluoresensi, mikroskop digital Dino-Lite Premier AM4115T-CFVW adalah salah satu dunia mikroskop fluoresensi terkecil dengan dekat LED eksitasi UV terintegrasi. Dengan faktor bentuk yang kecil, hal itu berdampak dunia mikroskop oleh perubahan bagaimana mikroskop fluoresensi dapat digunakan untuk penelitian dengan terjangkau serta menyenangkan.

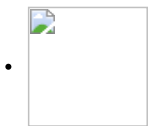
Pertanyaan **contact support (Klik)**

Optional :

Basic Stand

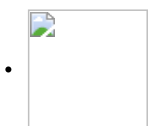
Profesional Stand

Overview



THE WORLD'S SMALLEST FLUORESCENCE MICROSCOPE

The AM4115T-CFVW cleverly integrates special 400nm LED excitation lights and a high-pass type emission filter that cuts off at 430nm into a Dino-Lite digital microscope. This makes it the smallest microscope capable of visualizing cyan and also a wide range of fluorescence for applications such as in: developmental biology, pathology, and anatomy. It also packs a white LED for non-excitation lighting to assist in locating points of interest.



USB 2.0 INTERFACE

It only requires USB 2.0 to power the device so it can be connected or travel with a compatible PC/ MAC for analysis and documentation with its bundled software.



CONVENIENT FLEXIBLE MAGNIFICATION

The Dino-Lite is capable of variable magnification with a range of 20x~50, 200x depending of working distance by simply zooming in or out with just a rotating dial.

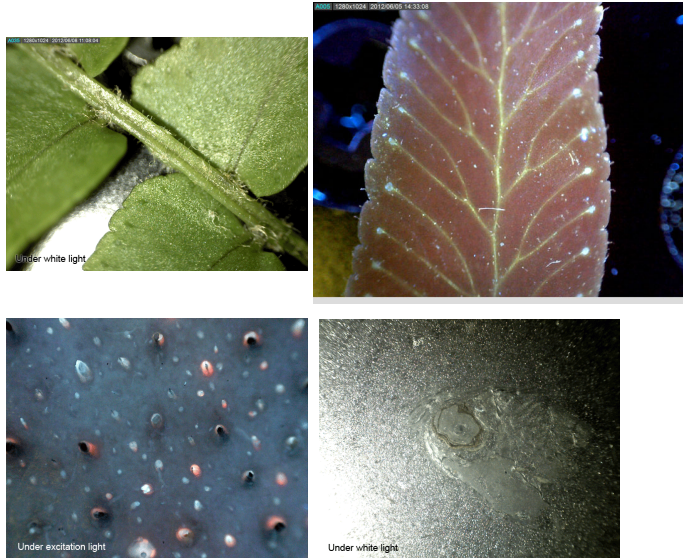


HIGH SENSITIVITY

The Dino-Lite uses a high sensitivity 1.3 megapixel sensor combined with a specially designed lens. The combination is capable of detecting faint fluorescent signals that is comparable to some traditional microscope capabilities.

Gallery

A collection of samples taken by various Dino-Lite fluorescence models
 Visualize there capabilities with samples of zebra fish, plants, and skin.



SPECIFICATIONS

Spesial feature	No
ESD Safe	No
Measurement functionality	Yes
Housing	Regular
Cap Changeable	No
Polarizer	No
Number of LEDs	7/1
Light / LED type	Cyan Fluorescence
Working distance	Standart

Magnification	200x
Resolution	1.3 MP (1280 x 1024)
Connection	USB 2.0

ADDITIONAL INFO

Specifications

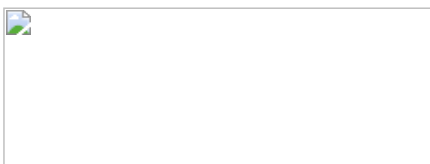
Model	AM4115T-CFVW Dino-Lite Premier
Interface	USB 2.0
Product Resolution	1.3M pixels (SXGA)
Magnification Rate	20x~50x, 200x
Sensor	Color CMOS
Frame Rate	Up to 30fps
	Image:
	DinoCapture2.0: BMP, GIF, PNG, MNG, TIF, TGA, PCX, WBMP, JP2, JPC, JPG, PGX, RAS, PNM
	DinoXcope: PNG, JPEG

Save Formats

Movie:
DinoCapture2.0: WMV, FLV, SWF
DinoXcope: MOV

Microtouch	Touch sensitive trigger on the microscope for taking pictures
Lighting	7 filtered 400nm excitation lighting with 430nm emission filter and one white light switched by software.
Measurement Function	Yes
Calibration Function	Yes
Operating System Supported	Windows 10, 8, 7, Vista, XP MAC OS 10.4 or later
Unit Weight	105(g)

Unit Dimension 10.5cm (H) x 3.2cm (D)



Package Dimensions 16cm (L) x 16cm (W) x 6cm (H)

Information about working distance and field of view

M	WD	FOV (x)	FOV (y)	DOF
20	60.2	19.5	15.6	1.52
30	33.5	13	10.4	
40	20.9	9.8	7.8	
50	13.9	7.8	6.3	0.3
60	9.7	6.5	5.2	
70	7.1	5.6	4.5	
80	5.5	4.9	3.9	
90	4.5	4.3	3.5	
100	4.1	3.9	3.1	
110	4	3.6	2.8	
120	4.1	3.3	2.6	
130	4.5	3	2.4	
140	5	2.8	2.2	
150	5.6	2.6	2.1	


160	6.3	2.4	2	
170	7.1	2.3	1.8	
180	8	2.2	1.7	
190	8.9	2.1	1.6	
200	9.9	2	1.6	0.04
210	10.9	1.9	1.5	
220	11.9	1.8	1.4	

M = magnification rate

WD = working distance

FOV = field of view

Unit = mm

 AM Series Variable Magnification Optics